

Knox County Sheriff  
Mobile Command Unit  
C-35 X-2 - Saber 5000

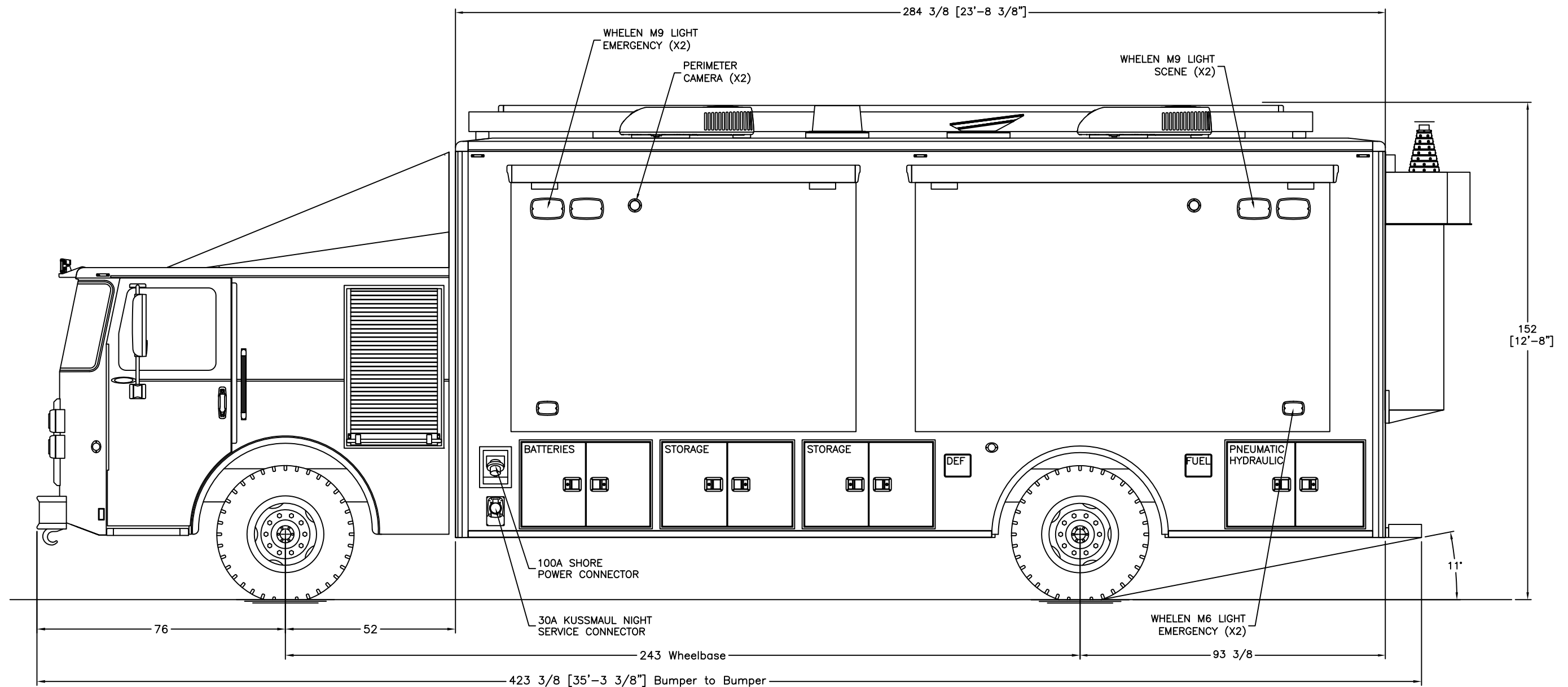
THIS DRAWING IS THE PROPERTY OF PIERCE MANUFACTURING. IT IS CONFIDENTIAL AND ALL RIGHTS ARE RESERVED. IT SHALL NOT BE REPRODUCED, COPIED, LENT, OR USED FOR ANY PURPOSE OTHER THAN THAT FOR WHICH IT IS SPECIFICALLY FURNISHED.

BID # 000  
REP: Andy Callaway - Frontline Communications  
DEALER: Jim Bell - EVS

PRELIMINARY USE ONLY  
THIS DRAWING IS FOR REPRESENTATION ONLY. DETAILED ENGINEERING DRAWINGS WILL BE CREATED FOR MANUFACTURING. CHANGES MAY BE REQUIRED TO ACCOMMODATE MANUFACTURING REQUIREMENTS AND CUSTOMER SPECIFICATIONS.

DRAWN	CJM	DATE	5/20/24
SHEET	1 OF 6	NOT TO SCALE	

SIZE	DWG NO.	REV
B	P2023-26	A



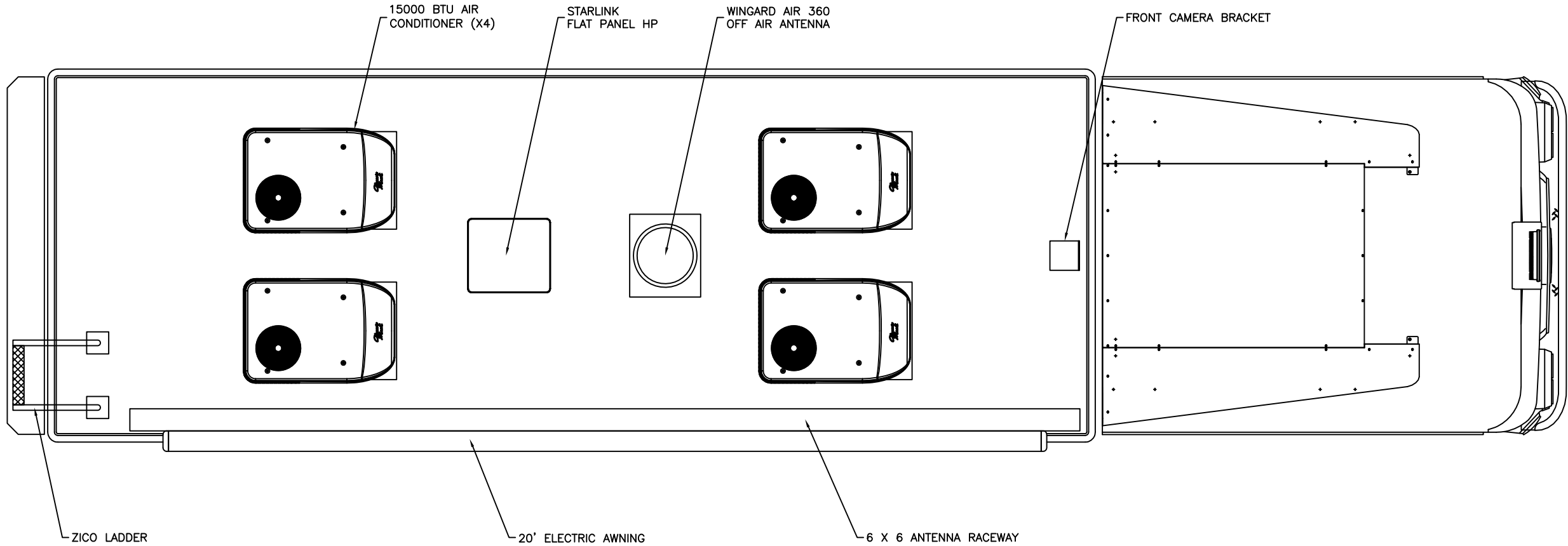
Knox County Sheriff  
Mobile Command Unit  
C-35 X-2 - Saber 5000

DRAWN	CJM	DATE	5/20/24	SIZE	DWG NO.	REV
SHEET	2 OF 6	NOT TO SCALE		B	P2023-26	A

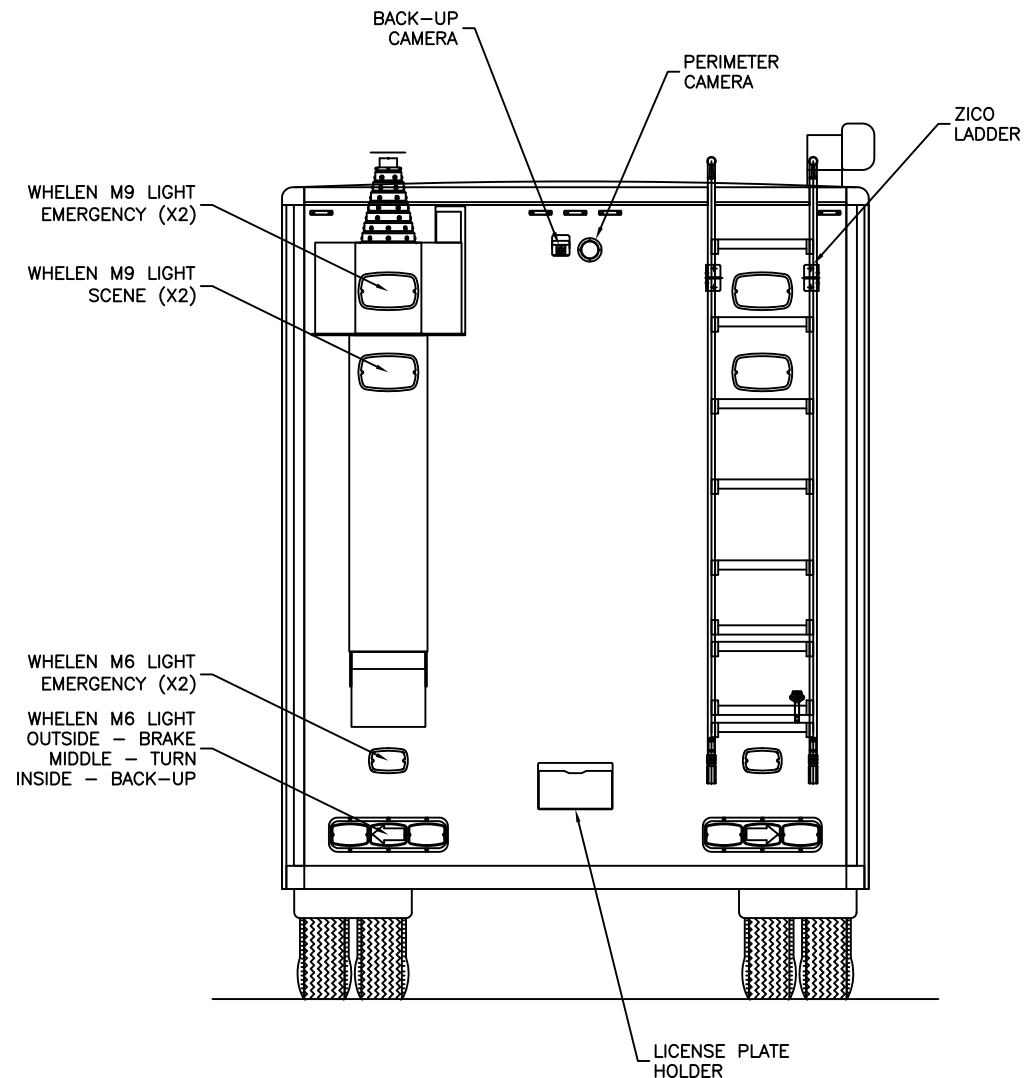
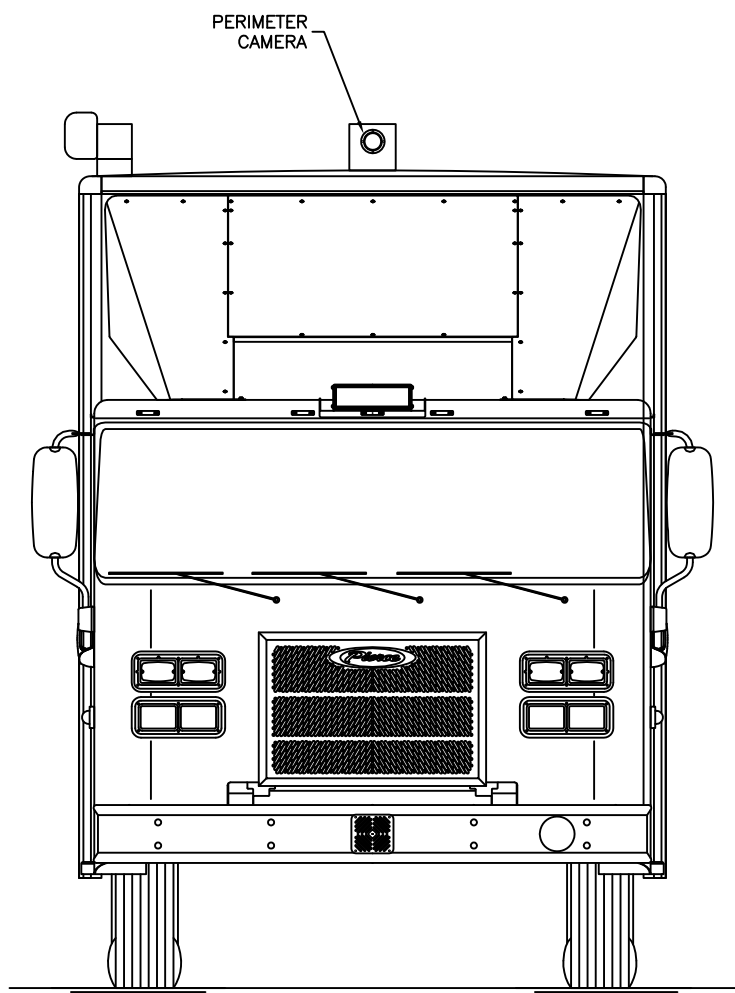
THIS DRAWING IS THE PROPERTY OF PIERCE MANUFACTURING. IT IS CONFIDENTIAL AND ALL RIGHTS ARE RESERVED. IT SHALL NOT BE REPRODUCED, COPIED, LENT, OR USED FOR ANY PURPOSE OTHER THAN THAT FOR WHICH IT IS SPECIFICALLY FURNISHED.

BID # 000  
REP: Andy Callaway - Frontline Communications  
DEALER: Jim Bell - EVS

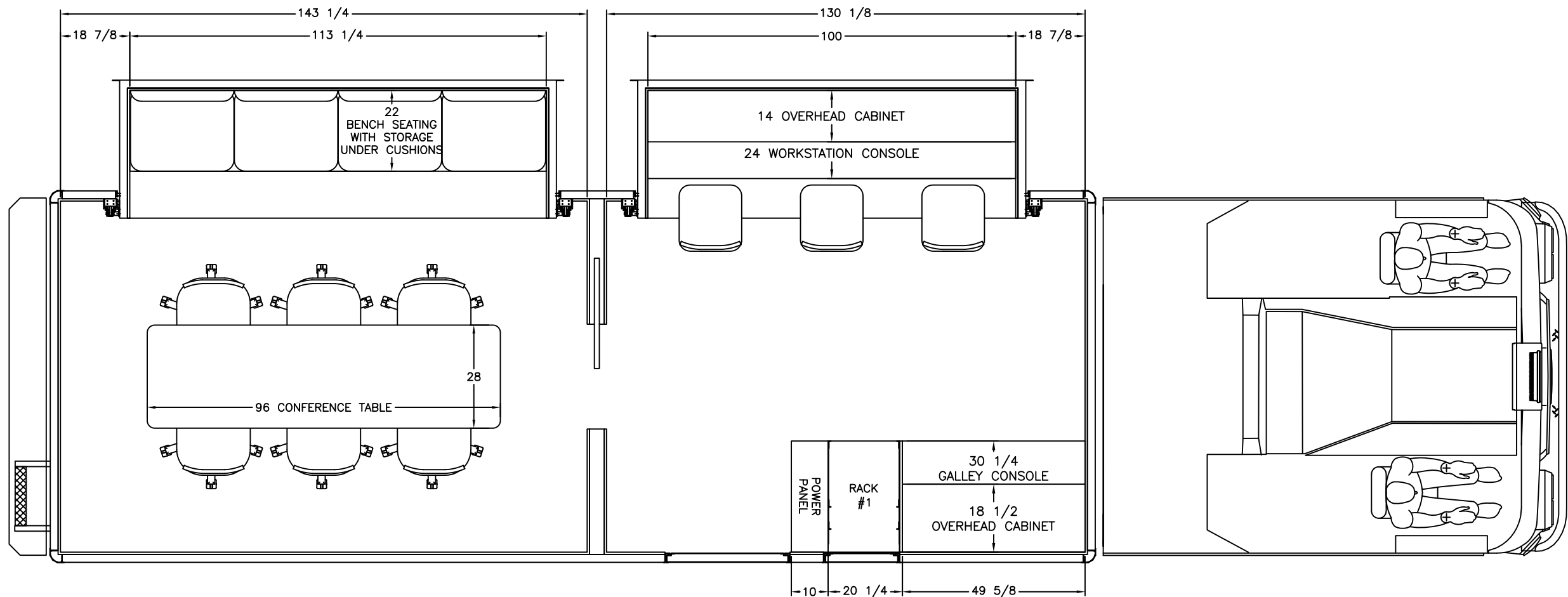
PRELIMINARY USE ONLY  
THIS DRAWING IS FOR REPRESENTATION ONLY. DETAILED ENGINEERING DRAWINGS WILL BE CREATED FOR MANUFACTURING. CHANGES MAY BE REQUIRED TO ACCOMMODATE MANUFACTURING REQUIREMENTS AND CUSTOMER SPECIFICATIONS.



THIS DRAWING IS THE PROPERTY OF PIERCE MANUFACTURING. IT IS CONFIDENTIAL AND ALL RIGHTS ARE RESERVED. IT SHALL NOT BE REPRODUCED, COPIED, LENT, OR USED FOR ANY PURPOSE OTHER THAN THAT FOR WHICH IT IS SPECIFICALLY FURNISHED.	BID # 000		PRELIMINARY USE ONLY  THIS DRAWING IS FOR REPRESENTATION ONLY. DETAILED ENGINEERING DRAWINGS WILL BE CREATED FOR MANUFACTURING. CHANGES MAY BE REQUIRED TO ACCOMMODATE MANUFACTURING REQUIREMENTS AND CUSTOMER SPECIFICATIONS.		A Division of Pierce Manufacturing Inc.		C-35 X-2 - Saber 5000				
	REP: Andy Callaway - Frontline Communications				DRAWN	CJM	DATE	5/20/24	SIZE	DWG NO.	REV
	DEALER: Jim Bell - EVS				SHEET	3 OF 6	NOT TO SCALE	B	P2023-26	A	



THIS DRAWING IS THE PROPERTY OF PIERCE MANUFACTURING. IT IS CONFIDENTIAL AND ALL RIGHTS ARE RESERVED. IT SHALL NOT BE REPRODUCED, COPIED, LENT, OR USED FOR ANY PURPOSE OTHER THAN THAT FOR WHICH IT IS SPECIFICALLY FURNISHED.	BID # 000		PRELIMINARY USE ONLY THIS DRAWING IS FOR REPRESENTATION ONLY. DETAILED ENGINEERING DRAWINGS WILL BE CREATED FOR MANUFACTURING. CHANGES MAY BE REQUIRED TO ACCOMMODATE MANUFACTURING REQUIREMENTS AND CUSTOMER SPECIFICATIONS.	A Division of Pierce Manufacturing Inc.		C-35 X-2 - Saber 5000				
	REP: Andy Callaway - Frontline Communications			DRAWN	CJM	DATE	5/20/24	SIZE	DWG NO.	REV
	DEALER: Jim Bell - EVS			SHEET	4 OF 6	NOT TO SCALE	B	P2023-26	A	

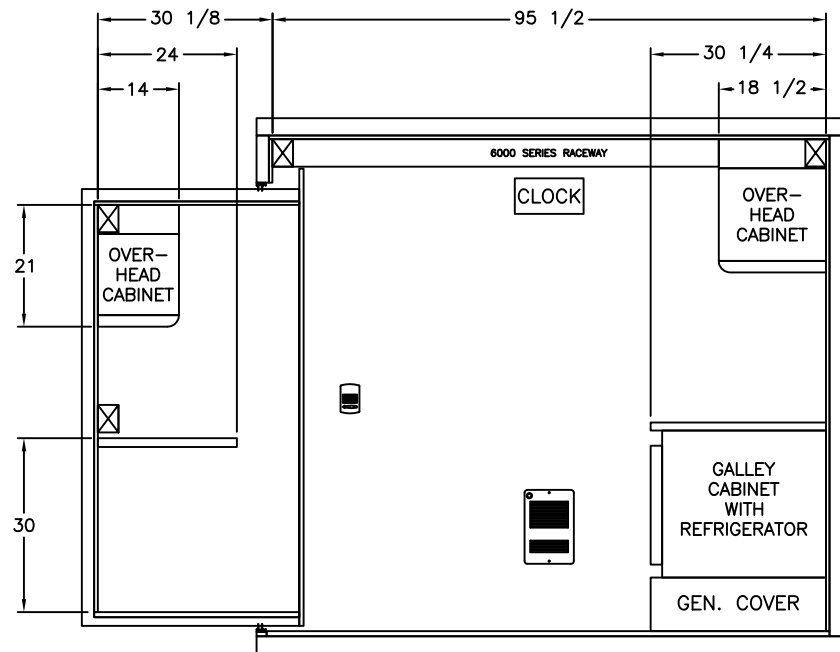


THIS DRAWING IS THE PROPERTY OF PIERCE MANUFACTURING. IT IS CONFIDENTIAL AND ALL RIGHTS ARE RESERVED. IT SHALL NOT BE REPRODUCED, COPIED, LENT, OR USED FOR ANY PURPOSE OTHER THAN THAT FOR WHICH IT IS SPECIFICALLY FURNISHED.

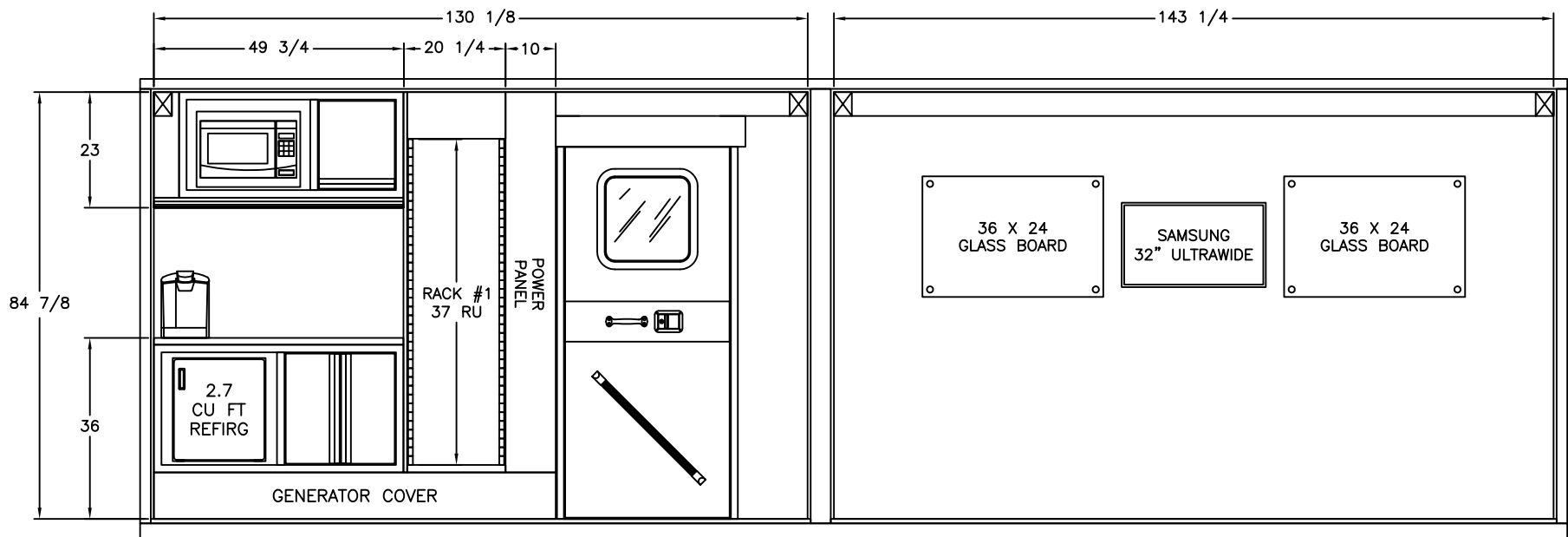
BID # 000  
REP: Andy Callaway - Frontline Communications  
DEALER: Jim Bell - EVS

PRELIMINARY USE ONLY  
THIS DRAWING IS FOR REPRESENTATION ONLY. DETAILED ENGINEERING DRAWINGS WILL BE CREATED FOR MANUFACTURING. CHANGES MAY BE REQUIRED TO ACCOMMODATE MANUFACTURING REQUIREMENTS AND CUSTOMER SPECIFICATIONS.

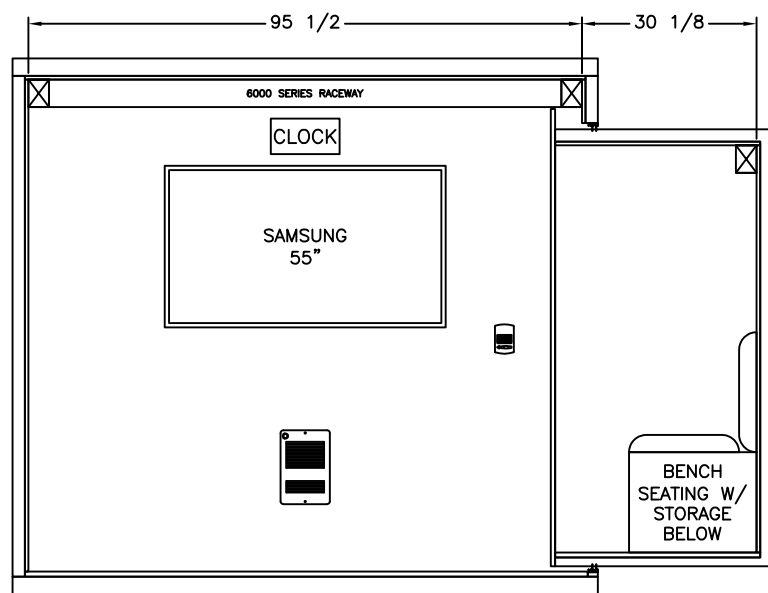
<b>FRONTLINE</b> COMMUNICATIONS <small>A Division of Pierce Manufacturing Inc.</small>			Knox County Sheriff Mobile Command Unit C-35 X-2 - Saber 5000		
DRAWN	CJM	DATE	5/20/24	SIZE	DWG NO.
SHEET	5 OF 6	NOT TO SCALE		B	P2023-26
				REV	A



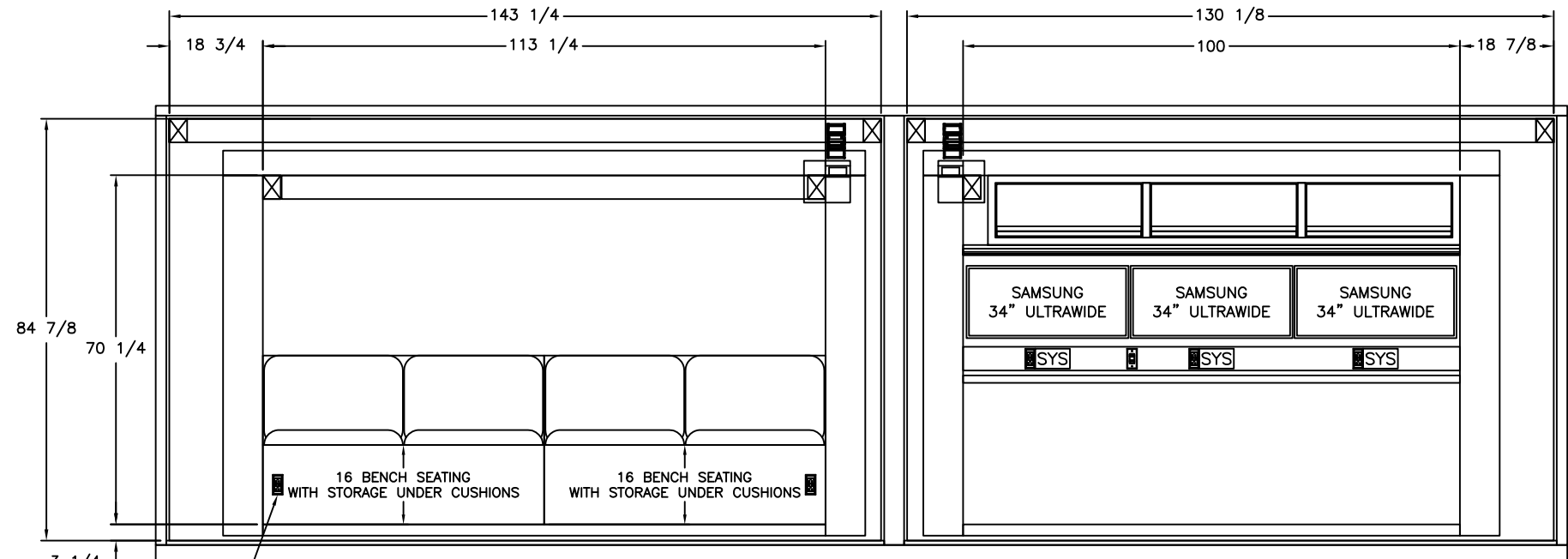
FRONT INTERIOR



CURB SIDE INTERIOR



REAR INTERIOR



STREET SIDE INTERIOR

120V OUTLET (X4 TOTAL)

QTY 2 ON FACE  
QTY 2 INSIDE BENCH

**FRONTLINE**  
COMMUNICATIONS  
A Division of Pierce Manufacturing Inc.

Knox County Sheriff  
Mobile Command Unit  
C-35 X-2 - Saber 5000

DRAWN CJM DATE 5/20/24  
SHEET 6 OF 6 NOT TO SCALE

SIZE B DWG NO. P2023-26 REV A

THIS DRAWING IS THE PROPERTY OF PIERCE MANUFACTURING. IT IS CONFIDENTIAL AND ALL RIGHTS ARE RESERVED. IT SHALL NOT BE REPRODUCED, COPIED, LENT, OR USED FOR ANY PURPOSE OTHER THAN THAT FOR WHICH IT IS SPECIFICALLY FURNISHED.

BID # 000  
REP: Andy Callaway - Frontline Communications  
DEALER: Jim Bell - EVS

PRELIMINARY USE ONLY  
THIS DRAWING IS FOR REPRESENTATION ONLY. DETAILED ENGINEERING DRAWINGS WILL BE CREATED FOR MANUFACTURING. CHANGES MAY BE REQUIRED TO ACCOMMODATE MANUFACTURING REQUIREMENTS AND CUSTOMER SPECIFICATIONS.