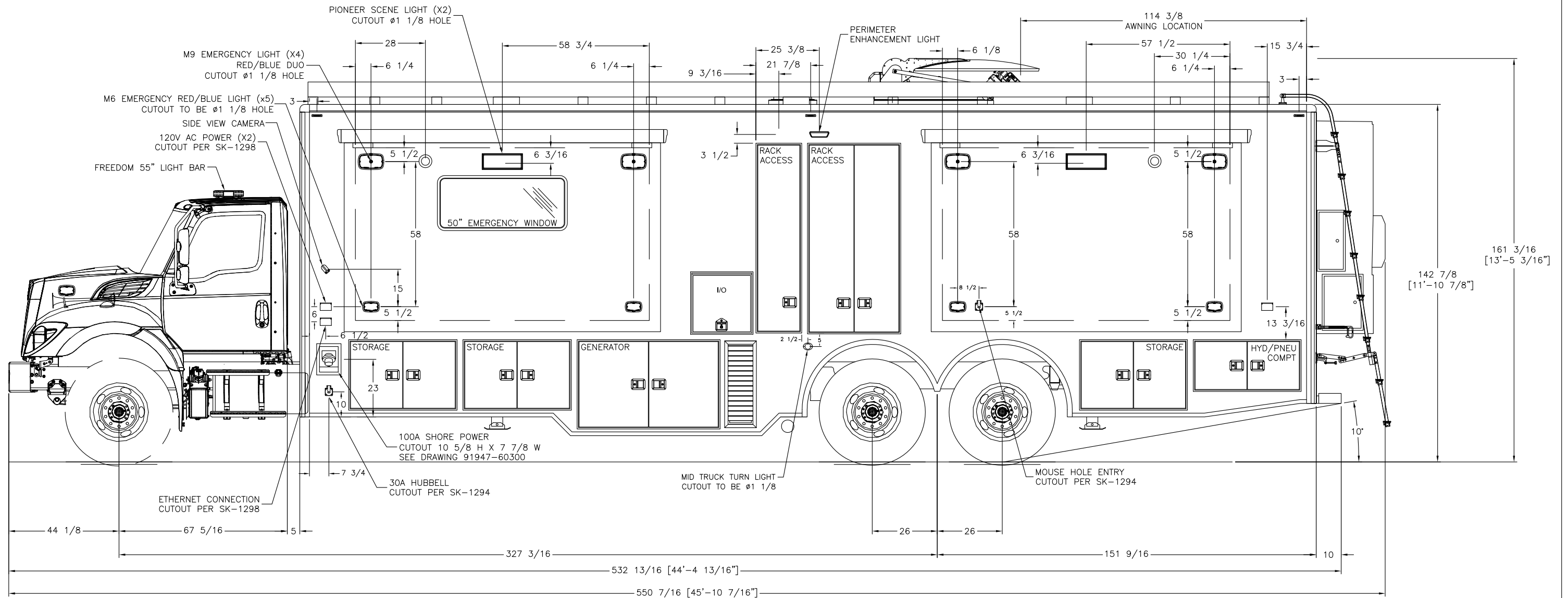


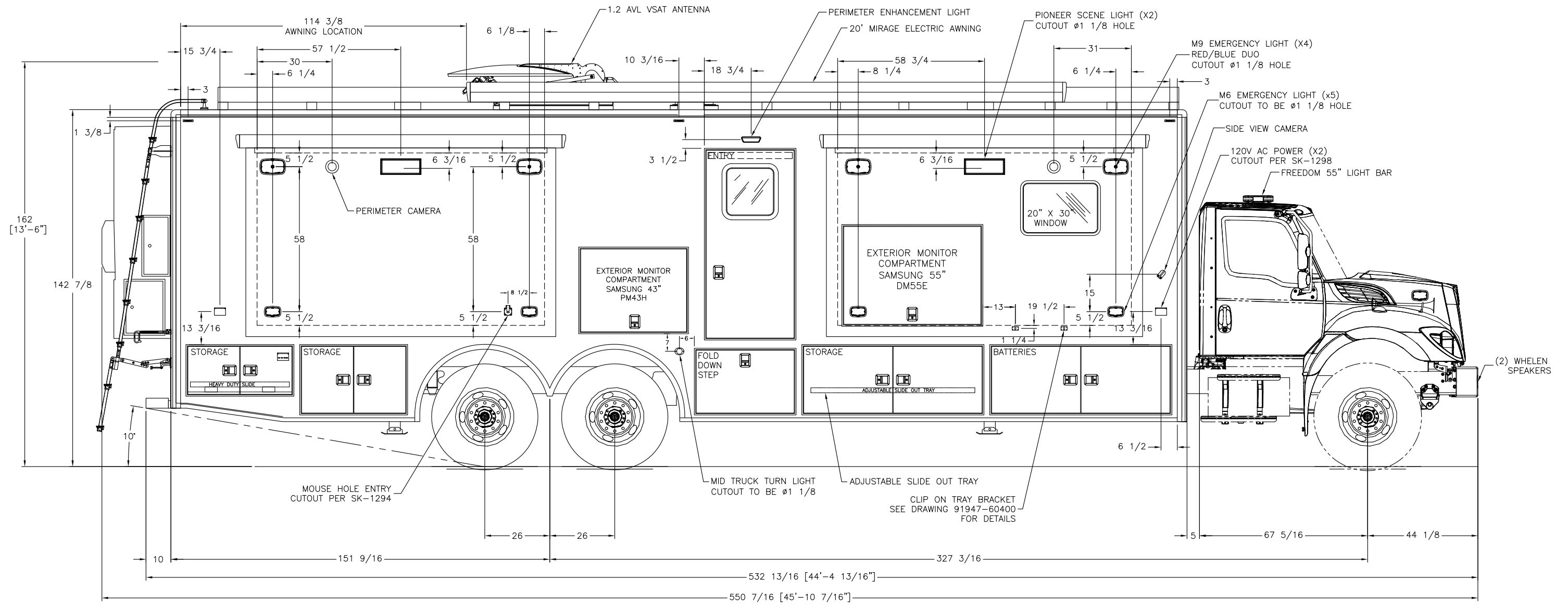
| REVISIONS | | | | | |
|-----------|--------|---------------------|----------|-----|-----|
| CHK DATE | CHK BY | DESCRIPTION | DATE | BY | REV |
| 06/30/21 | MRS | ENGINEERING RELEASE | 06/22/21 | JRP | 00 |




THIS DRAWING IS THE PROPERTY OF FRONTLINE COMMUNICATIONS CORPORATION. IT IS CONFIDENTIAL AND ALL RIGHTS ARE RESERVED. IT SHALL NOT BE REPRODUCED, COPIED, LENT, NOR USED FOR ANY PURPOSE OTHER THAN THAT FOR WHICH IT IS SPECIFICALLY FURNISHED.

| | | |
|---|------------------------------|--|
| DO NOT SCALE THIS DRAWING DIMENSIONS ARE IN INCHES UNLESS OTHERWISE SPECIFIED | MATERIAL SEE NOTES | FRONTLINE COMMUNICATIONS A Division of Pierce Manufacturing Inc. 12770 44th Street North Clearwater, FL 33762-4713 (727) 573-0400 FAX (727) 571-3295 |
| TOLERANCES: ANGULAR: ± 1° BEND: ± 1° 2 PLACE DECIMAL ± .010 3 PLACE DECIMAL ± .005 FRACTIONS ± 1/16 | FINISH SEE NOTES | |
| JOB NUMBER OR PRODUCT LINE 91947 | DRAWN BY JRP | DATE 06/22/21 |
| SHEET 1 OF 1 | SCALE 1:40 | CHECKED BY MRS |
| | | DATE 06/30/21 |
| | | SIZE B |
| | | DWG NO. 91947-50300 |
| | | EXTERIOR LAYOUT STREET SIDE |

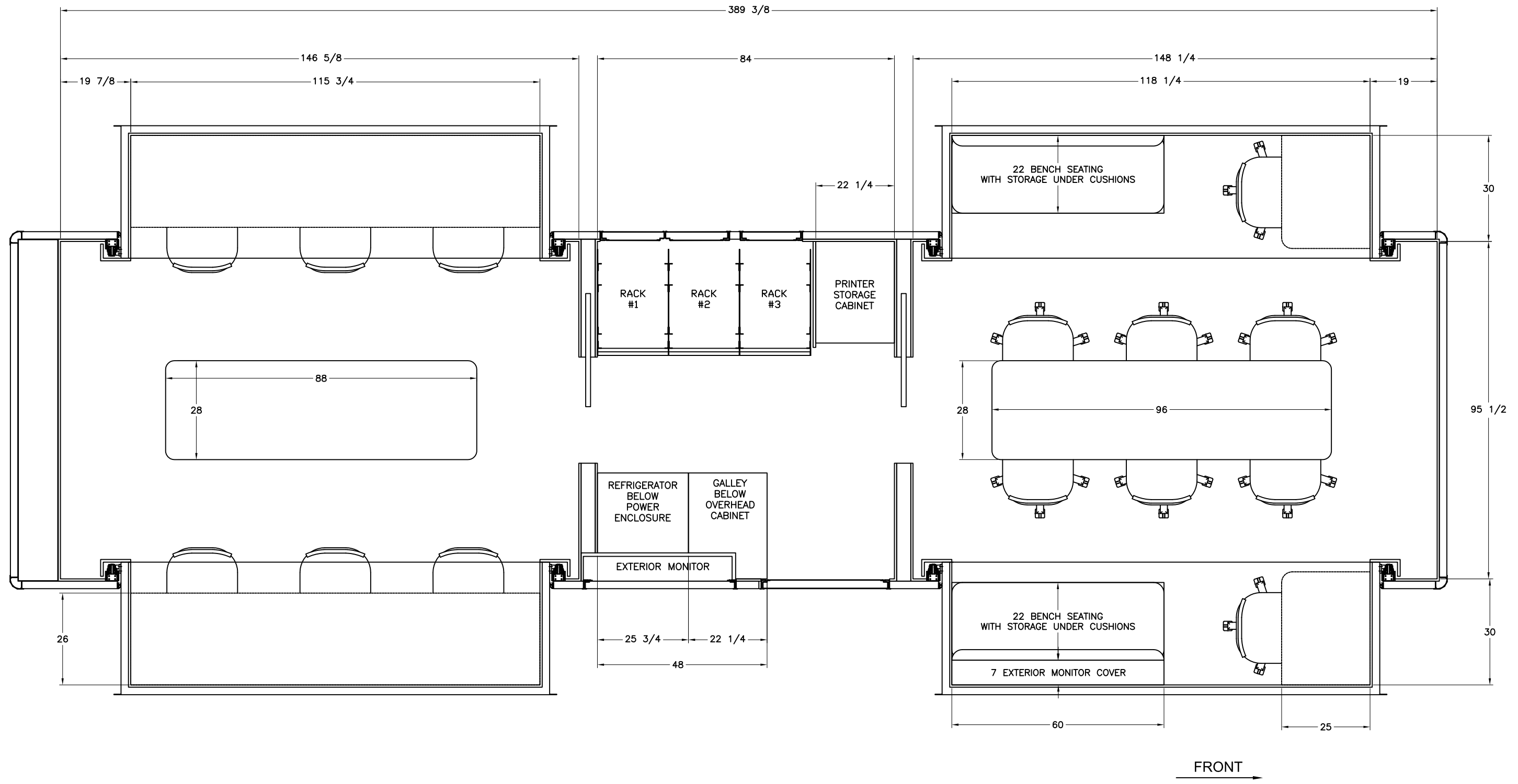
| REVISIONS | | | | | | |
|-----------|------|--------|---------------------|----------|-----|-----|
| CHK | DATE | CHK BY | DESCRIPTION | DATE | BY | REV |
| 6/29/21 | | MRS | ENGINEERING RELEASE | 06/22/21 | JRP | 00 |



THIS DRAWING IS THE PROPERTY OF FRONTLINE COMMUNICATIONS CORPORATION. IT IS CONFIDENTIAL AND ALL RIGHTS ARE RESERVED. IT SHALL NOT BE REPRODUCED, COPIED, LENT, NOR USED FOR ANY PURPOSE OTHER THAN THAT FOR WHICH IT IS SPECIFICALLY FURNISHED.

| | | | | | |
|---|--|---|--|---|-------------------------------|
| DO NOT SCALE THIS DRAWING DIMENSIONS ARE IN INCHES UNLESS OTHERWISE SPECIFIED | | MATERIAL SEE NOTES | |  12770 44th Street North Clearwater, FL 33762-4713 (727) 573-0400 FAX (727) 571-3295 | |
| TOLERANCES: ANGULAR: ± 1° BEND: ± 1° 2 PLACE DECIMAL ± .010 3 PLACE DECIMAL ± .005 FRACTIONS ± 1/16 | | FINISH SEE NOTES | | EXTERIOR LAYOUT CURB SIDE | |
| JOB NUMBER OR PRODUCT LINE 91947 | | DRAWN BY JRP DATE 06/22/21 | | | |
| SHEET 1 OF 1 SCALE 1:40 | | CHECKED BY MRS DATE 6/29/21 | | SIZE B | DWG NO. 91947-50200 |

| REVISIONS | | | | | |
|-----------|--------|---|---------|-----|-----|
| CHK DATE | CHK BY | DESCRIPTION | DATE | BY | REV |
| 3/24/22 | MRS | REAR CONFERENCE TABLE CHANGED FROM REMOVABLE TO PERMANENT | 3/23/22 | CJM | 02 |

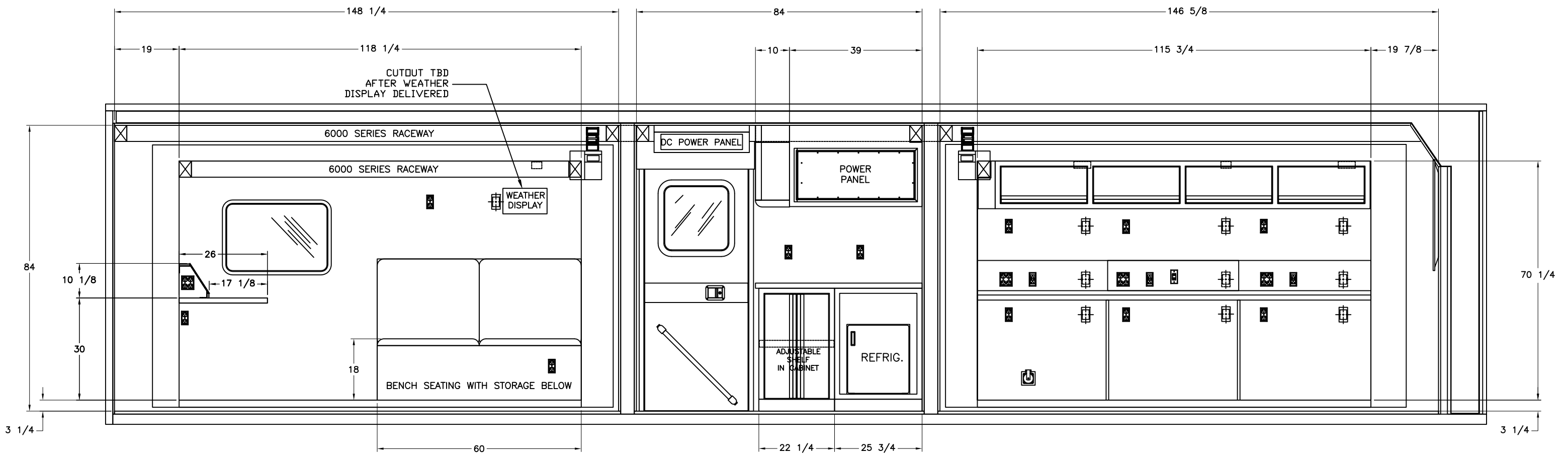


THIS DRAWING IS THE PROPERTY OF FRONTLINE COMMUNICATIONS CORPORATION. IT IS CONFIDENTIAL AND ALL RIGHTS ARE RESERVED. IT SHALL NOT BE REPRODUCED, COPIED, LENT, NOR USED FOR ANY PURPOSE OTHER THAN THAT FOR WHICH IT IS SPECIFICALLY FURNISHED.

| | | | | |
|---|----------------------------|--------------------|----------------|--|
| DO NOT SCALE THIS DRAWING DIMENSIONS ARE IN INCHES UNLESS OTHERWISE SPECIFIED | MATERIAL | SEE NOTES | | 12770 44th Street North Clearwater, FL 33762-4713 (727) 573-0400 An Oshkosh Corporation Company FAX (727) 571-3295 |
| | FINISH | MILL FINISH | | |
| TOLERANCES: ANGULAR: ± 1° BEND: ± 1" 2 PLACE DECIMAL ± .010 3 PLACE DECIMAL ± .005 FRACTIONS ± 1/16 | JOB NUMBER OR PRODUCT LINE | DRAWN BY | DATE | INTERIOR LAYOUT FLOOR SIZE DWG NO. B 91947-40100 |
| | 91947 | CJM | 7/9/21 | |
| SHEET | SCALE | CHECKED BY | DATE | |
| 1 OF 1 | 30 | MRS | 9/21/21 | |

REVISIONS

| CHK DATE | CHK BY | DESCRIPTION | DATE | BY | REV |
|----------|--------|--|---------|-----|-----|
| 11/9/21 | MRS | ADDED RECESSED WEATHER STATION DISPLAY | 11/8/21 | CJM | 02 |

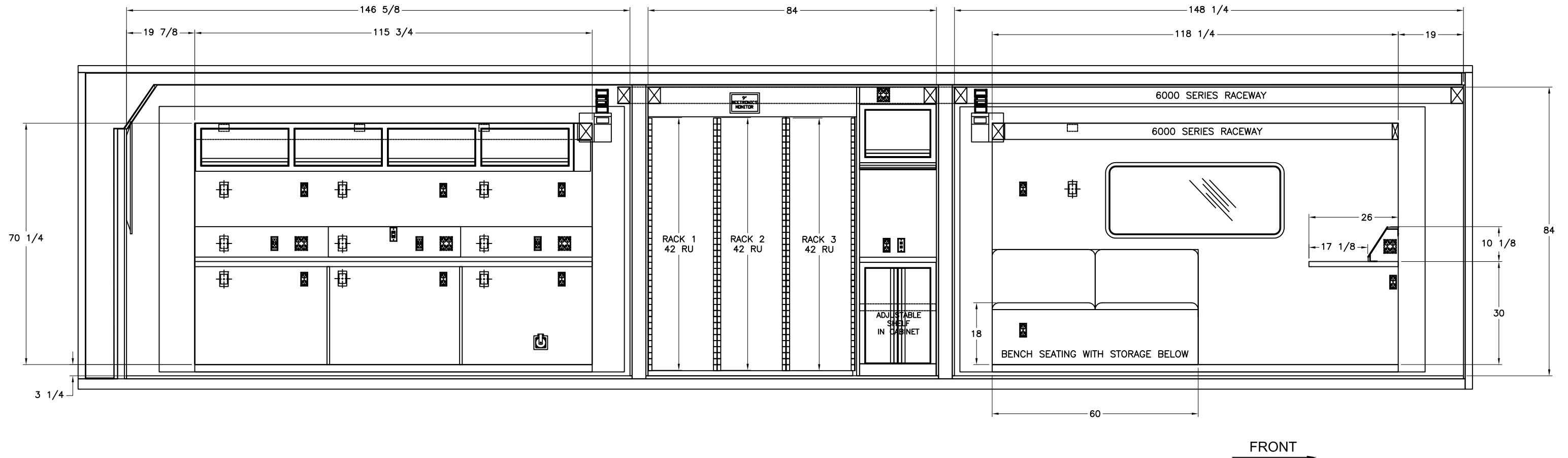


- ☒ - 120V AC POWER (DUPLEX)
- ☒ - LOW VOLTAGE DEVICE RING (SYSTEM)
- ☒ - DIMMER LIGHT SWITCH
- ☒ - NETWORK / PHONE
- ☒ - 120V AC POWER (QUAD)

THIS DRAWING IS THE PROPERTY OF FRONTLINE COMMUNICATIONS CORPORATION. IT IS CONFIDENTIAL AND ALL RIGHTS ARE RESERVED. IT SHALL NOT BE REPRODUCED, COPIED, LENT, NOR USED FOR ANY PURPOSE OTHER THAN THAT FOR WHICH IT IS SPECIFICALLY FURNISHED.


| | | | | | |
|---|--------------------|------------------------------|------------------------|--|--|
| DO NOT SCALE THIS DRAWING DIMENSIONS ARE IN INCHES UNLESS OTHERWISE SPECIFIED | | MATERIAL SEE NOTES | | 12770 44th Street North Clearwater, FL 33762-4713 (727) 573-0400 An Oshkosh Corporation Company FAX (727) 571-3295 | |
| TOLERANCES: ANGULAR: ± 1° BEND: ± 1" 2 PLACE DECIMAL ± .010 3 PLACE DECIMAL ± .005 FRACTIONS ± 1/16 | | FINISH MILL FINISH | | | |
| JOB NUMBER OR PRODUCT LINE 91947 | | DRAWN BY CJM | DATE 7/9/21 | INTERIOR LAYOUT CURB SIDE | |
| SHEET 1 OF 1 | SCALE 30 | CHECKED BY MRS | DATE 9/21/21 | | |

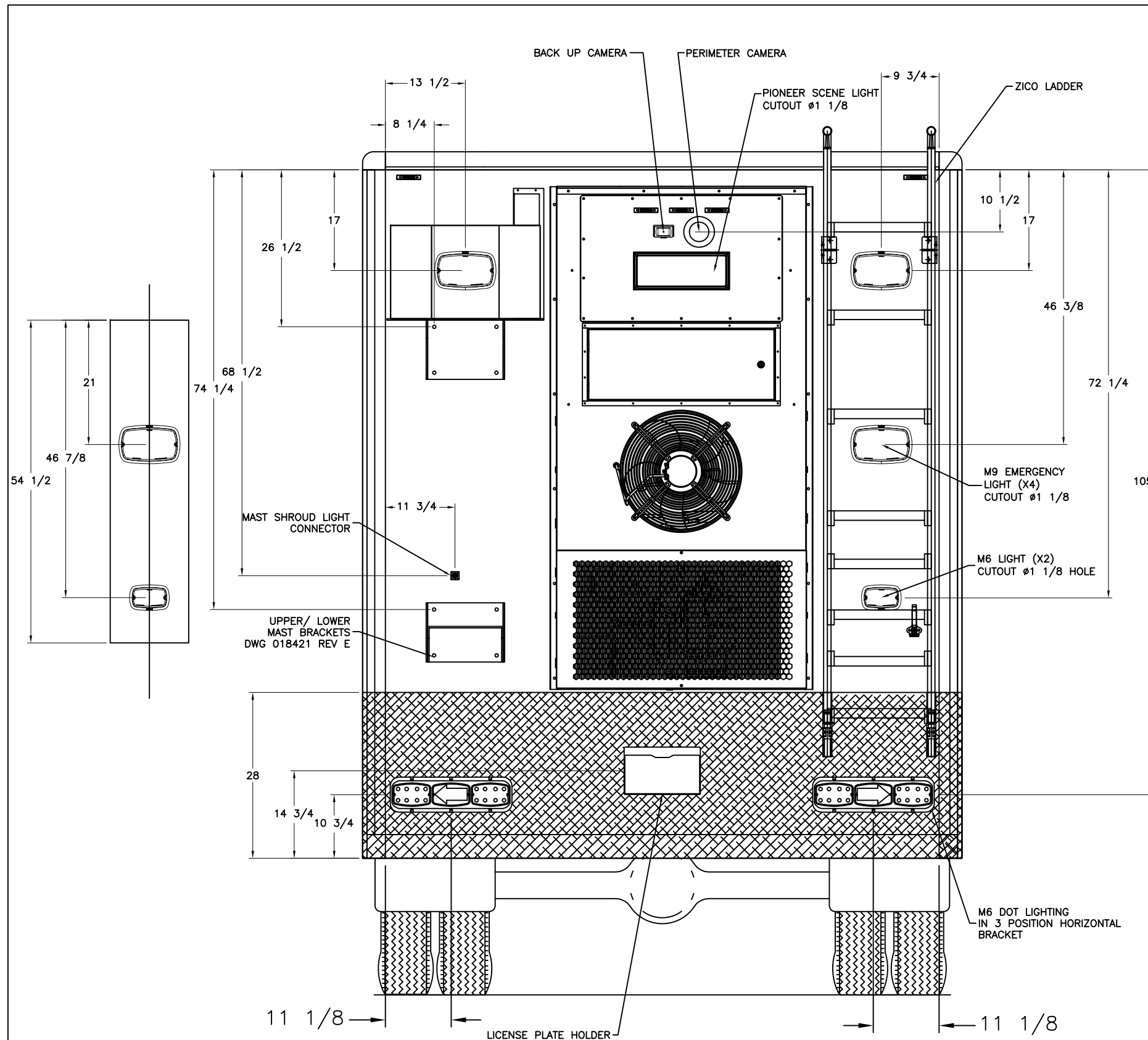
| REVISIONS | | | | | |
|-----------|--------|---------------------|--------|-----|-----|
| CHK DATE | CHK BY | DESCRIPTION | DATE | BY | REV |
| 9/21/21 | MRS | ENGINEERING RELEASE | 7/9/21 | CJM | 00 |



- - 120V AC POWER (DUPLEX)
- - LOW VOLTAGE DEVICE RING (SYSTEM)
- - DIMMER LIGHT SWITCH
- - NETWORK / PHONE
- - 120V AC POWER (QUAD)

THIS DRAWING IS THE PROPERTY OF FRONTLINE COMMUNICATIONS CORPORATION. IT IS CONFIDENTIAL AND ALL RIGHTS ARE RESERVED. IT SHALL NOT BE REPRODUCED, COPIED, LENT, NOR USED FOR ANY PURPOSE OTHER THAN THAT FOR WHICH IT IS SPECIFICALLY FURNISHED.

| | | | | | |
|---|--------------------|------------------------------|------------------------|---|--|
| DO NOT SCALE THIS DRAWING DIMENSIONS ARE IN INCHES UNLESS OTHERWISE SPECIFIED | | MATERIAL SEE NOTES | |  12770 44th Street North Clearwater, FL 33762-4713 (727) 573-0400 FAX (727) 571-3295 An Oshkosh Corporation Company | |
| TOLERANCES: ANGULAR: ± 1° BEND: ± 1° 2 PLACE DECIMAL ± .010 3 PLACE DECIMAL ± .005 FRACTIONS ± 1/16 | | FINISH MILL FINISH | | INTERIOR LAYOUT STREET SIDE | |
| JOB NUMBER OR PRODUCT LINE 91947 | | DRAWN BY CJM | DATE 7/9/21 | SIZE B | |
| SHEET 1 OF 1 | SCALE 30 | CHECKED BY MRS | DATE 9/21/21 | DWG NO. 91947-40300 | |



| REVISIONS | | | | | |
|-----------|--------|----------------|----------|-----|-----|
| CHK DATE | CHK BY | DESCRIPTION | DATE | BY | REV |
| 07/13/21 | PJS | MOVED M6 UP 3" | 07/13/21 | JRP | 01 |

DO NOT SCALE THIS DRAWING
 DIMENSIONS ARE IN INCHES
 UNLESS OTHERWISE SPECIFIED

TOLERANCES:
 ANGULAR: ± 1° BEND: ± 1'
 2 PLACE DECIMAL ± .010
 3 PLACE DECIMAL ± .005
 FRACTIONS ± 1/16

JOB NUMBER OR PRODUCT LINE
91947

SHEET 1 OF 1 SCALE 1:20

| | |
|------------|-----------|
| MATERIAL | SEE NOTES |
| FINISH | SEE NOTES |
| DRAWN BY | DATE |
| JRP | 06/22/21 |
| CHECKED BY | DATE |
| MRS | 06/30/21 |

FRONTLINE COMMUNICATIONS
 A Division of Pierce Manufacturing Inc.

12770 44th Street North
 Clearwater, FL 33762-4713
 (727) 573-0400
 FAX (727) 571-3295

EXTERIOR LAYOUT REAR WALL

SIZE **B** DWG NO. **91947-50500**

THIS DRAWING IS THE PROPERTY OF FRONTLINE COMMUNICATIONS CORPORATION. IT IS CONFIDENTIAL AND ALL RIGHTS ARE RESERVED. IT SHALL NOT BE REPRODUCED, COPIED, LENT, NOR USED FOR ANY PURPOSE OTHER THAN THAT FOR WHICH IT IS SPECIFICALLY FURNISHED.