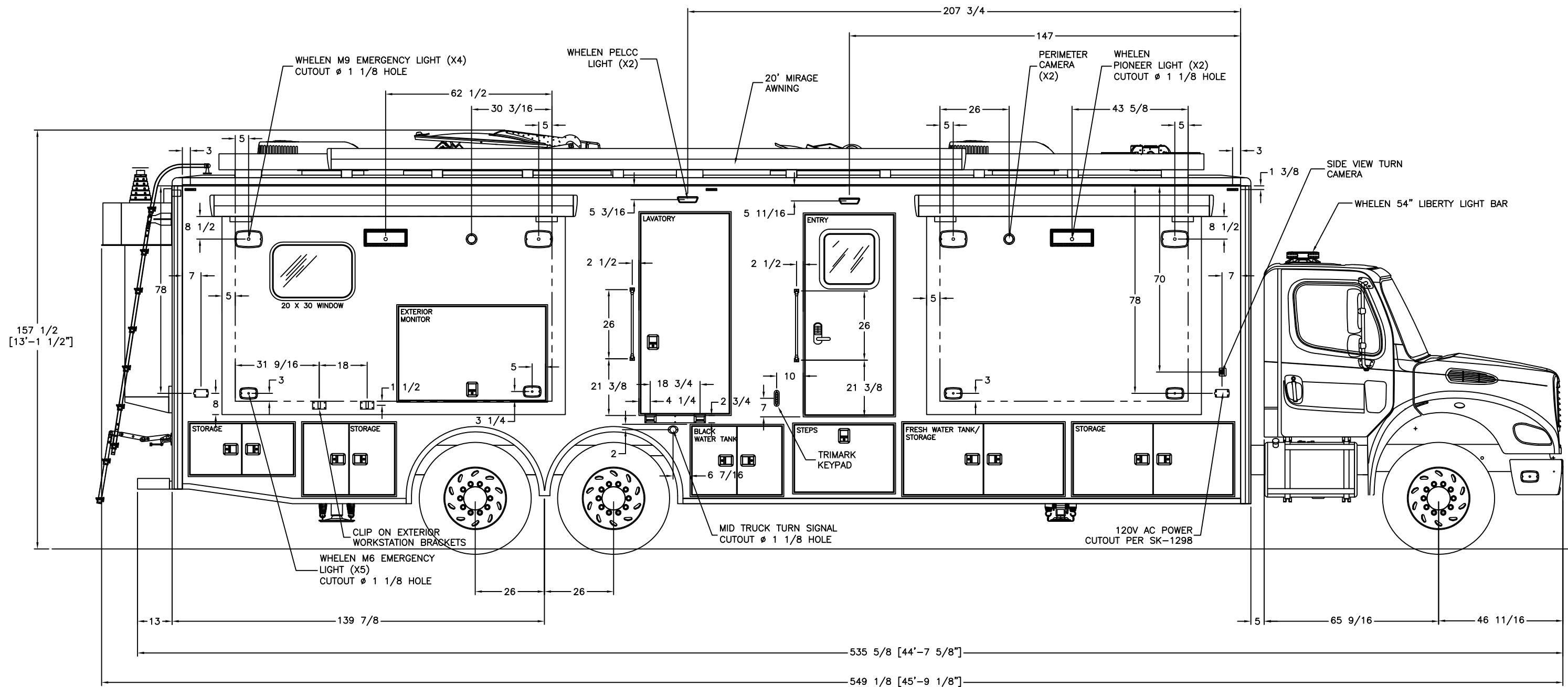


REVISIONS					
CHK DATE	CHK BY	DESCRIPTION	DATE	BY	REV
6/7/23	JAB	ADDED MISSING CLIP-ON TRAY	6/7/23	CJM	01




157 1/2  
[13'-1 1/2"]

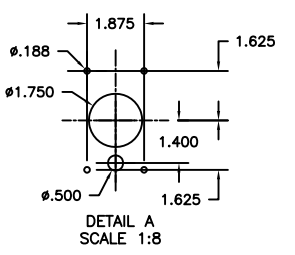
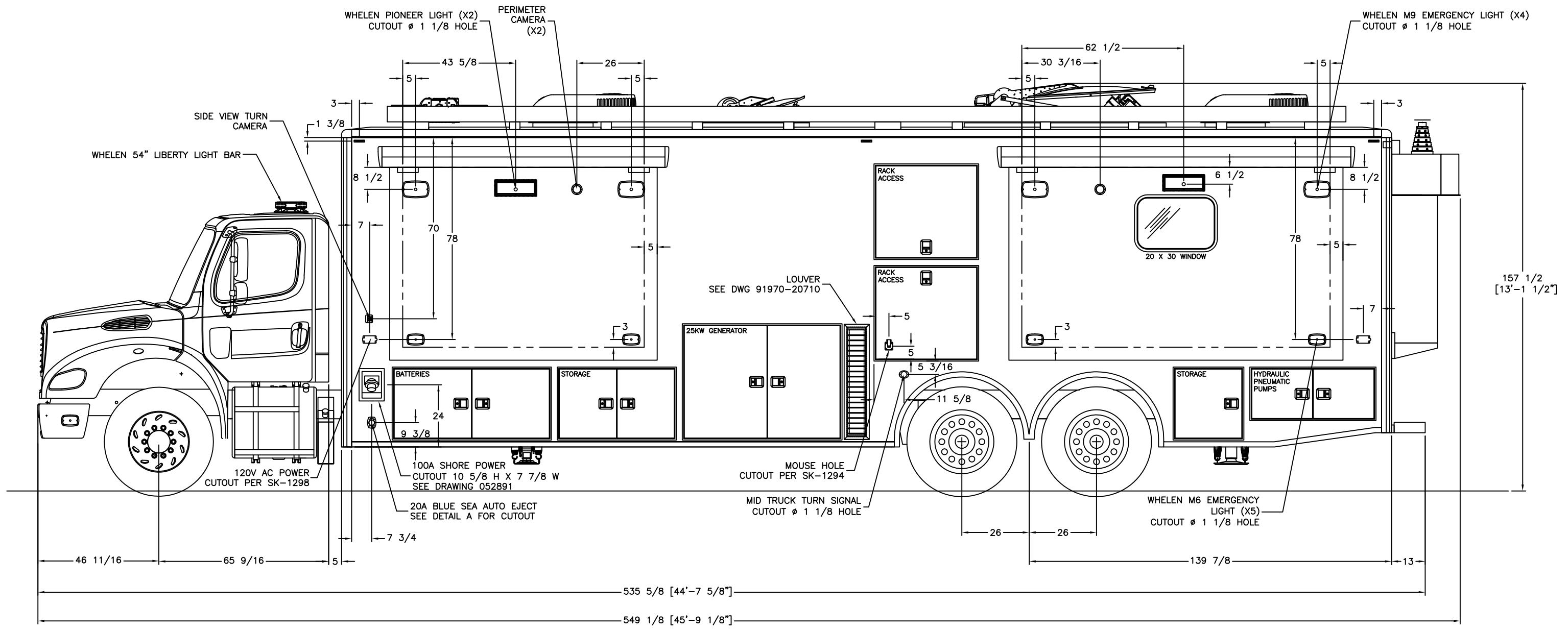
535 5/8 [44'-7 5/8"]  
549 1/8 [45'-9 1/8"]

----- INSIDE EDGE OF FRAME TUBE

THIS DRAWING IS THE PROPERTY OF FRONTLINE COMMUNICATIONS CORPORATION. IT IS CONFIDENTIAL AND ALL RIGHTS ARE RESERVED. IT SHALL NOT BE REPRODUCED, COPIED, LENT, NOR USED FOR ANY PURPOSE OTHER THAN THAT FOR WHICH IT IS SPECIFICALLY FURNISHED.

DO NOT SCALE THIS DRAWING DIMENSIONS ARE IN INCHES UNLESS OTHERWISE SPECIFIED		MATERIAL <b>SEE NOTES</b>		 12770 44th Street North Clearwater, FL 33762-4713 (727) 573-0400 FAX (727) 571-3295 A Division of Pierce Manufacturing Inc.	
TOLERANCES: ANGULAR: ± 1° BEND: ± 1° 2 PLACE DECIMAL ± .010 3 PLACE DECIMAL ± .005 FRACTIONS ± 1/16		FINISH <b>MILL FINISH</b>		<b>EXTERIOR LAYOUT CURB SIDE</b>	
JOB NUMBER OR PRODUCT LINE <b>91970</b>		DRAWN BY <b>CJM</b>	DATE <b>10/14/22</b>	SIZE <b>B</b>	
SHEET <b>1 OF 1</b>	SCALE <b>40</b>	CHECKED BY <b>MRS</b>	DATE <b>10/21/22</b>	DWG NO. <b>91970-50200</b>	

REVISIONS						
CHK DATE	CHK BY	DESCRIPTION		DATE	BY	REV
10/21/22	MRS	ENGINEERING RELEASE		10/14/22	CJM	00



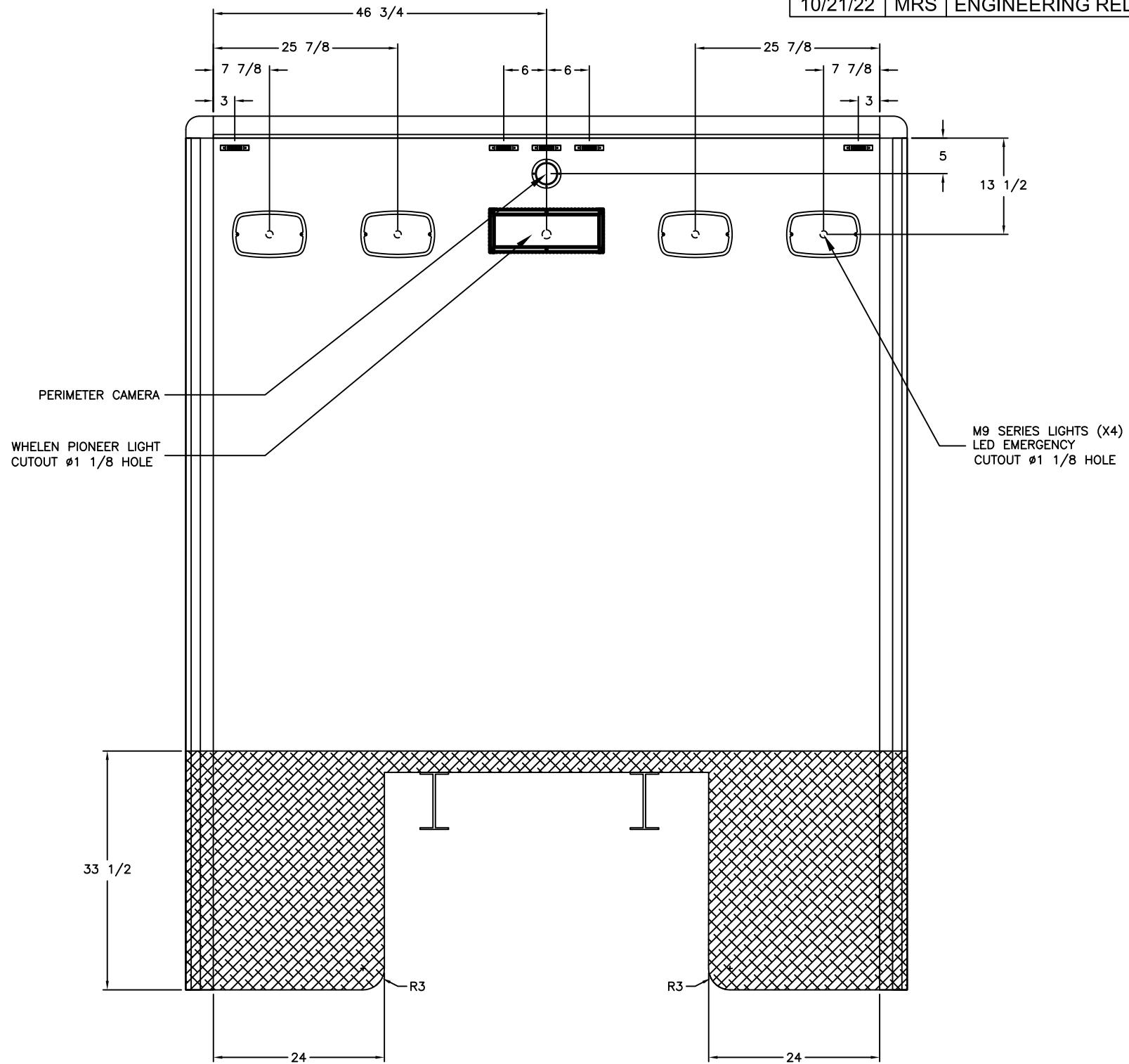
--- INSIDE EDGE OF FRAME TUBE

THIS DRAWING IS THE PROPERTY OF FRONTLINE COMMUNICATIONS CORPORATION. IT IS CONFIDENTIAL AND ALL RIGHTS ARE RESERVED. IT SHALL NOT BE REPRODUCED, COPIED, LENT, NOR USED FOR ANY PURPOSE OTHER THAN THAT FOR WHICH IT IS SPECIFICALLY FURNISHED.

DO NOT SCALE THIS DRAWING DIMENSIONS ARE IN INCHES UNLESS OTHERWISE SPECIFIED		MATERIAL <b>SEE NOTES</b>		 12770 44th Street North Clearwater, FL 33762-4713 (727) 573-0400 FAX (727) 571-3295 A Division of Pierce Manufacturing Inc.	
TOLERANCES: ANGULAR: $\pm$ 1° BEND: $\pm$ 1° 2 PLACE DECIMAL $\pm$ .010 3 PLACE DECIMAL $\pm$ .005 FRACTIONS $\pm$ 1/16		FINISH <b>MILL FINISH</b>		<b>EXTERIOR LAYOUT STREET SIDE</b>	
JOB NUMBER OR PRODUCT LINE <b>91970</b>		DRAWN BY <b>CJM</b>	DATE <b>10/14/22</b>	SIZE <b>B</b>	
SHEET <b>1 OF 1</b>	SCALE <b>40</b>	CHECKED BY <b>MRS</b>	DATE <b>10/21/22</b>	DWG NO. <b>91970-50300</b>	

REVISIONS

CHK DATE	CHK BY	DESCRIPTION	DATE	BY	REV
10/21/22	MRS	ENGINEERING RELEASE	10/17/22	CJM	00



THIS DRAWING IS THE PROPERTY OF FRONTLINE COMMUNICATIONS CORPORATION. IT IS CONFIDENTIAL AND ALL RIGHTS ARE RESERVED. IT SHALL NOT BE REPRODUCED, COPIED, LENT, NOR USED FOR ANY PURPOSE OTHER THAN THAT FOR WHICH IT IS SPECIFICALLY FURNISHED.

DO NOT SCALE THIS DRAWING	
DIMENSIONS ARE IN INCHES UNLESS OTHERWISE SPECIFIED	
TOLERANCES:	
ANGULAR: ± 1°	BEND: ± 1"
2 PLACE DECIMAL	± .010
3 PLACE DECIMAL	± .005
FRACTIONS	± 1/16
JOB NUMBER OR PRODUCT LINE	
91970	
SHEET	SCALE
1 OF 1	20

MATERIAL	
SEE NOTES	
FINISH	
MILL FINISH	
DRAWN BY	DATE
CJM	10/17/22
CHECKED BY	DATE
MRS	10/21/22

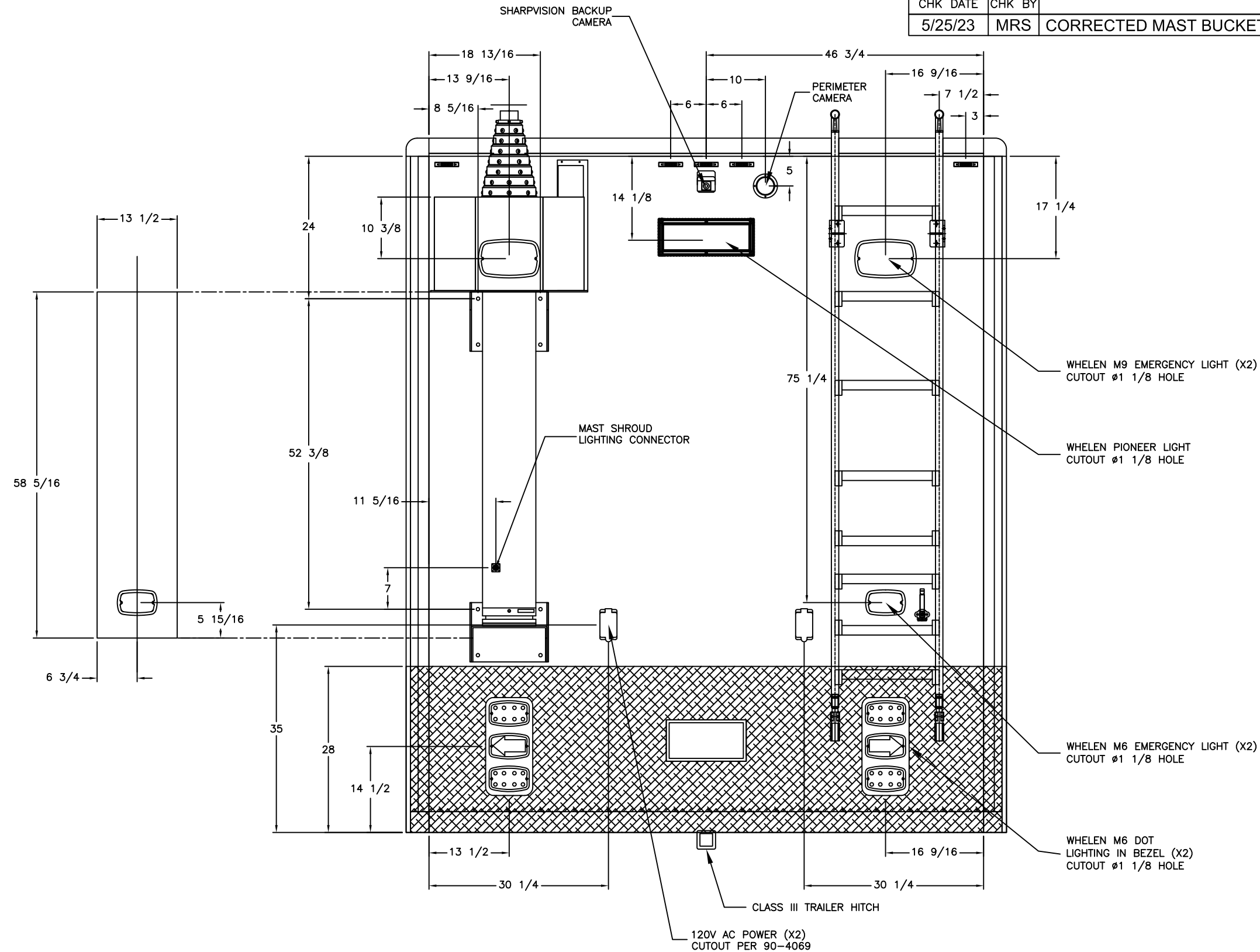
**FRONTLINE COMMUNICATIONS**  
 A Division of Pierce Manufacturing Inc.  
 12770 44th Street North  
 Clearwater, FL 33762-4713  
 (727) 573-0400  
 FAX (727) 571-3295

**EXTERIOR LAYOUT FRONT**

SIZE	DWG NO.
B	91970-50400

REVISIONS

CHK DATE	CHK BY	DESCRIPTION	DATE	BY	REV
5/25/23	MRS	CORRECTED MAST BUCKET & LIGHT LOCATIONS	5/25/23	CJM	02



THIS DRAWING IS THE PROPERTY OF FRONTLINE COMMUNICATIONS CORPORATION. IT IS CONFIDENTIAL AND ALL RIGHTS ARE RESERVED. IT SHALL NOT BE REPRODUCED, COPIED, LENT, NOR USED FOR ANY PURPOSE OTHER THAN THAT FOR WHICH IT IS SPECIFICALLY FURNISHED.

DO NOT SCALE THIS DRAWING  
 DIMENSIONS ARE IN INCHES  
 UNLESS OTHERWISE SPECIFIED  
 TOLERANCES:  
 ANGULAR: ± 1° BEND: ± 1°  
 2 PLACE DECIMAL ± .010  
 3 PLACE DECIMAL ± .005  
 FRACTIONS ± 1/16

MATERIAL  
**SEE NOTES**  
 FINISH  
**MILL FINISH**

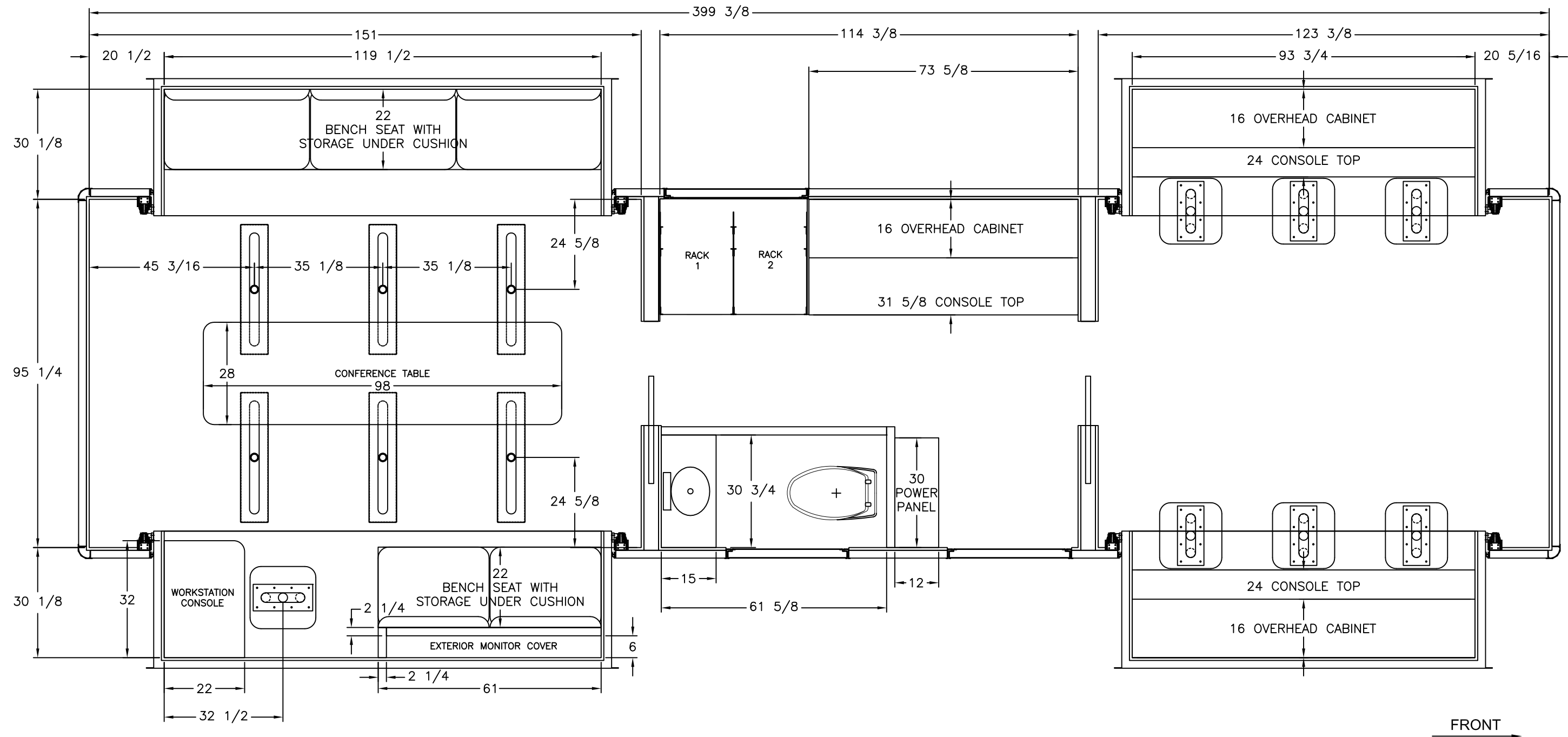
JOB NUMBER OR PRODUCT LINE  
**91970**  
 SHEET 1 OF 1 SCALE 20  
 DRAWN BY **CJM** DATE **10/17/22**  
 CHECKED BY **MRS** DATE **10/21/22**

**FRONTLINE COMMUNICATIONS**  
 A Division of Pierce Manufacturing Inc.  
 12770 44th Street North  
 Clearwater, FL 33762-4713  
 (727) 573-0400  
 FAX (727) 571-3295


**EXTERIOR LAYOUT REAR**

SIZE **B** DWG NO. **91970-50500**

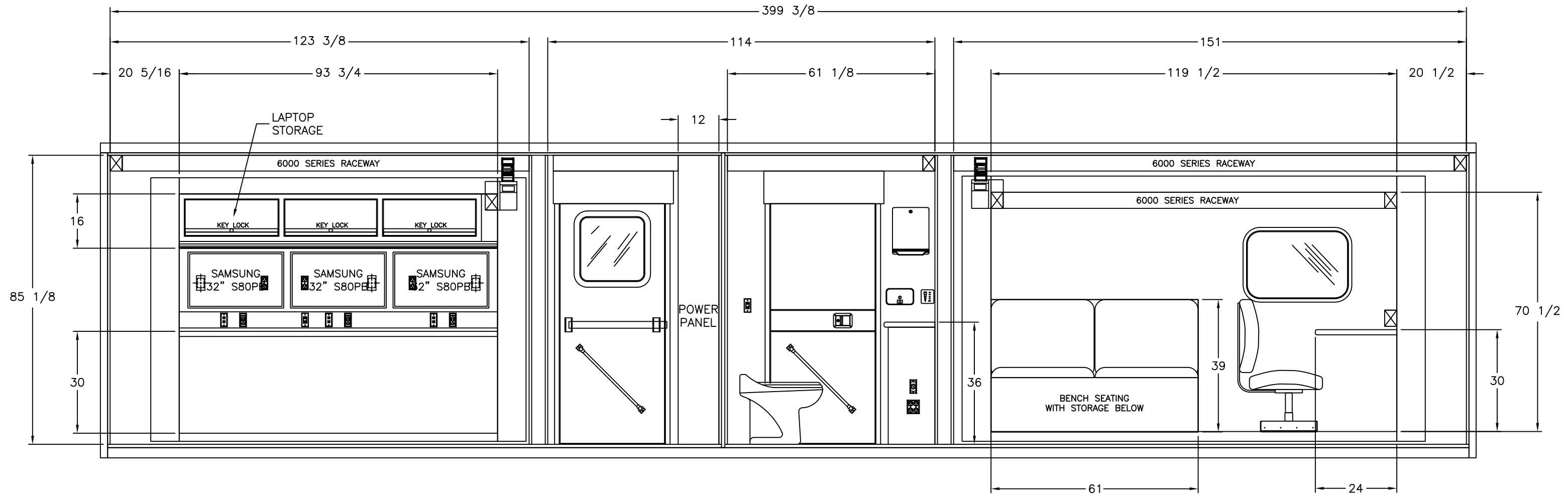
REVISIONS					
CHK DATE	CHK BY	DESCRIPTION	DATE	BY	REV
5/16/23	JAB	CURB SIDE BENCH REPLACED FOLD DOWN SEATS PER CO-4	5/16/23	CJM	01



THIS DRAWING IS THE PROPERTY OF FRONTLINE COMMUNICATIONS CORPORATION. IT IS CONFIDENTIAL AND ALL RIGHTS ARE RESERVED. IT SHALL NOT BE REPRODUCED, COPIED, LENT, NOR USED FOR ANY PURPOSE OTHER THAN THAT FOR WHICH IT IS SPECIFICALLY FURNISHED.

DO NOT SCALE THIS DRAWING DIMENSIONS ARE IN INCHES UNLESS OTHERWISE SPECIFIED		MATERIAL <b>SEE NOTES</b>		 12770 44th Street North Clearwater, FL 33762-4713 (727) 573-0400 FAX (727) 571-3295 A Division of Pierce Manufacturing Inc.	
TOLERANCES: ANGULAR: ± 1° BEND: ± 1" 2 PLACE DECIMAL ± .010 3 PLACE DECIMAL ± .005 FRACTIONS ± 1/16		FINISH <b>MILL FINISH</b>		<b>INTERIOR LAYOUT FLOOR</b>	
JOB NUMBER OR PRODUCT LINE <b>91970</b>		DRAWN BY <b>CJM</b>	DATE <b>10/28/22</b>		
SHEET <b>1 OF 1</b>	SCALE <b>30</b>	CHECKED BY <b>MRS</b>	DATE <b>11/7/22</b>	SIZE <b>B</b>	DWG NO. <b>91970-40100</b>

REVISIONS					
CHK DATE	CHK BY	DESCRIPTION	DATE	BY	REV
5/16/23	JAB	BENCH REPLACED FOLD DOWN SEATS PER CO-4	5/16/23	CJM	01



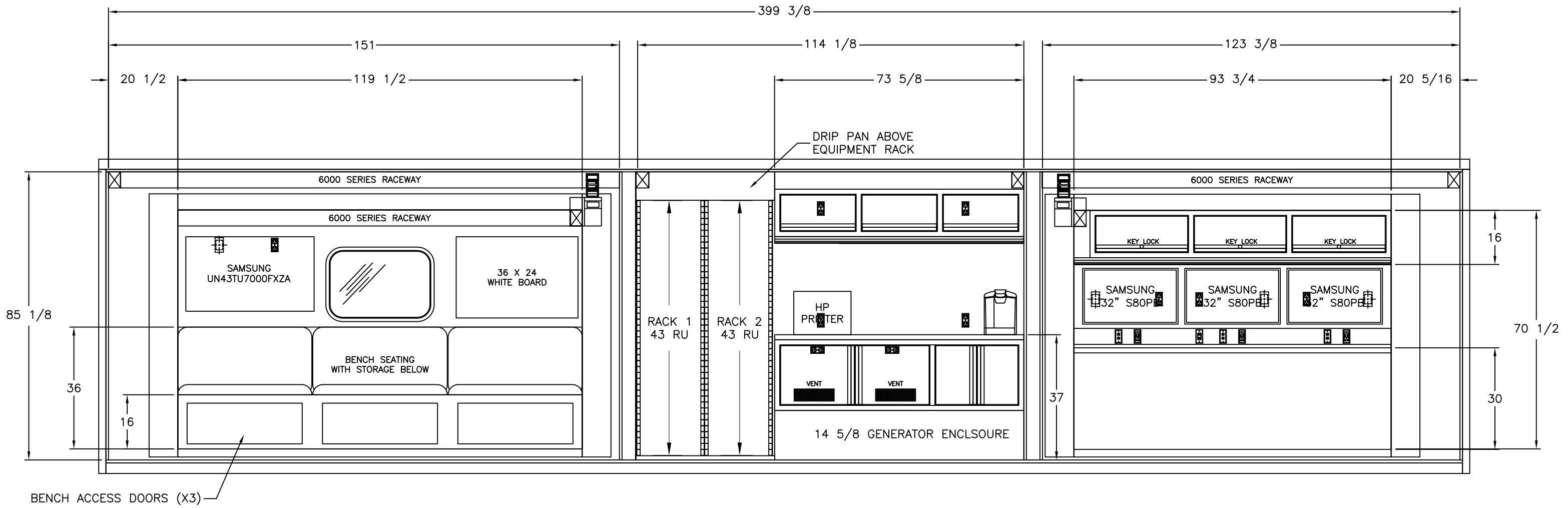
← FRONT

- NETWORK / PHONE
- DIMMER SWITCH (LED LIGHTS)
- 120V AC POWER / USB POWER
- 120V AC POWER (DUPLEX)
- LOW VOLTAGE DEVICE RING (SYSTEM)

THIS DRAWING IS THE PROPERTY OF FRONTLINE COMMUNICATIONS CORPORATION. IT IS CONFIDENTIAL AND ALL RIGHTS ARE RESERVED. IT SHALL NOT BE REPRODUCED, COPIED, LENT, NOR USED FOR ANY PURPOSE OTHER THAN THAT FOR WHICH IT IS SPECIFICALLY FURNISHED.

DO NOT SCALE THIS DRAWING		MATERIAL		 12770 44th Street North Clearwater, FL 33762-4713 (727) 573-0400 FAX (727) 571-3295	
DIMENSIONS ARE IN INCHES UNLESS OTHERWISE SPECIFIED		SEE NOTES			
TOLERANCES:		FINISH		<b>INTERIOR LAYOUT CURB SIDE</b>	
ANGULAR: ± 1° BEND: ± 1°		MILL FINISH			
2 PLACE DECIMAL ± .010		DRAWN BY		DATE	
3 PLACE DECIMAL ± .005		CJM		10/28/22	
FRACTIONS ± 1/16		CHECKED BY		DATE	
JOB NUMBER OR PRODUCT LINE		MRS		11/7/22	
91970		SHEET		SIZE	
1 OF 1		SCALE		DWG NO.	
30		B		91970-40200	

REVISIONS					
CHK DATE	CHK BY	DESCRIPTION	DATE	BY	REV
8/3/23	MRS	ADDED POWER & SYSTEMS BOX DETAILS FOR REAR TV	8/3/23	CJM	02

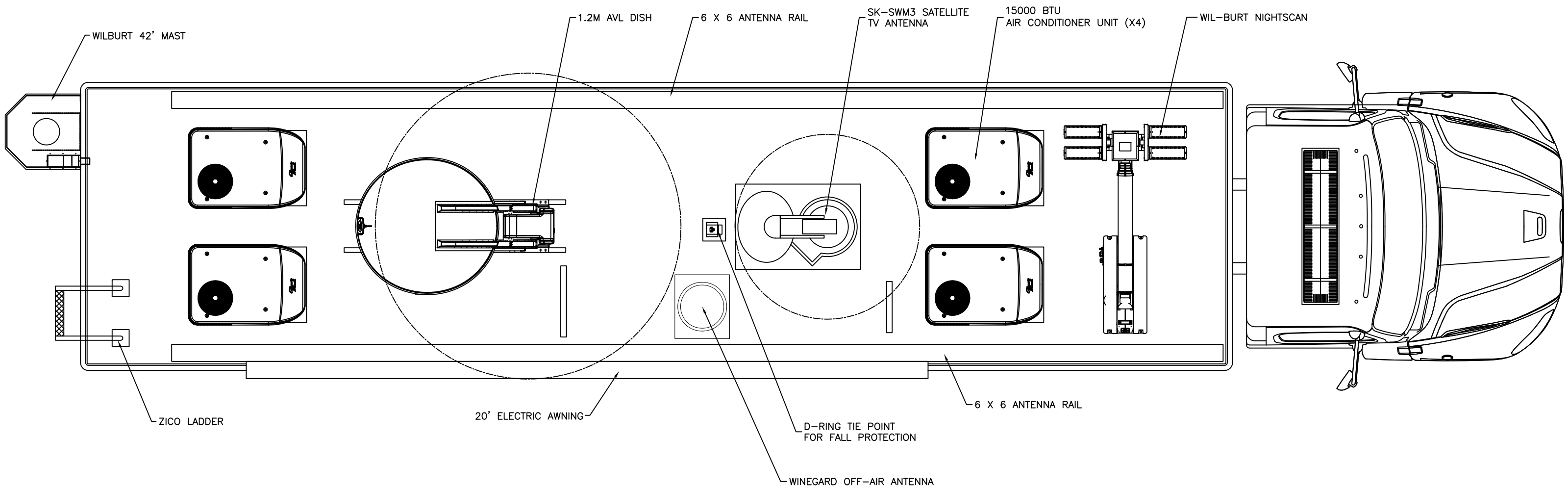


- NETWORK / PHONE
- DIMMER SWITCH (LED LIGHTS)
- 120V AC POWER / USB POWER
- 120V AC POWER (DUPLEX)
- LOW VOLTAGE DEVICE RING (SYSTEM)


THIS DRAWING IS THE PROPERTY OF FRONTLINE COMMUNICATIONS CORPORATION. IT IS CONFIDENTIAL AND ALL RIGHTS ARE RESERVED. IT SHALL NOT BE REPRODUCED, COPIED, LENT, NOR USED FOR ANY PURPOSE OTHER THAN THAT FOR WHICH IT IS SPECIFICALLY FURNISHED.

DO NOT SCALE THIS DRAWING		MATERIAL		 12770 44th Street North Clearwater, FL 33762-4713 (727) 573-0400 FAX (727) 571-3295	
DIMENSIONS ARE IN INCHES UNLESS OTHERWISE SPECIFIED		SEE NOTES			
TOLERANCES:		FINISH		<b>INTERIOR LAYOUT</b> <b>STREET SIDE</b>	
ANGULAR: ± 1° BEND: ± 1"		MILL FINISH			
2 PLACE DECIMAL ± .010		DRAWN BY		DATE	
3 PLACE DECIMAL ± .005		CJM		10/28/22	
FRACTIONS ± 1/16		CHECKED BY		DATE	
JOB NUMBER OR PRODUCT LINE		MRS		11/7/22	
91970		SHEET		SIZE	
1 OF 1		SCALE		DWG NO.	
30		B		91970-40300	

REVISIONS					
CHK DATE	CHK BY	DESCRIPTION	DATE	BY	REV
10/5/23	JRP	REVISED FALL PROTECTION TO ADD PLATE	10/5/23	CJM	02



THIS DRAWING IS THE PROPERTY OF FRONTLINE COMMUNICATIONS CORPORATION. IT IS CONFIDENTIAL AND ALL RIGHTS ARE RESERVED. IT SHALL NOT BE REPRODUCED, COPIED, LENT, NOR USED FOR ANY PURPOSE OTHER THAN THAT FOR WHICH IT IS SPECIFICALLY FURNISHED.

DO NOT SCALE THIS DRAWING DIMENSIONS ARE IN INCHES UNLESS OTHERWISE SPECIFIED		MATERIAL <b>SEE NOTES</b>		 12770 44th Street North Clearwater, FL 33762-4713 (727) 573-0400 FAX (727) 571-3295 A Division of Pierce Manufacturing Inc.	
TOLERANCES: ANGULAR: ± 1° BEND: ± 1° 2 PLACE DECIMAL ± .010 3 PLACE DECIMAL ± .005 FRACTIONS ± 1/16		FINISH <b>MILL FINISH</b>		<b>EXTERIOR LAYOUT ROOF</b>	
JOB NUMBER OR PRODUCT LINE <b>91970</b>		DRAWN BY <b>CJM</b>	DATE <b>10/18/22</b>	SIZE <b>B</b>	
SHEET <b>1 OF 2</b>	SCALE <b>35</b>	CHECKED BY <b>MRS</b>	DATE <b>10/21/22</b>	DWG NO. <b>91970-50600</b>	