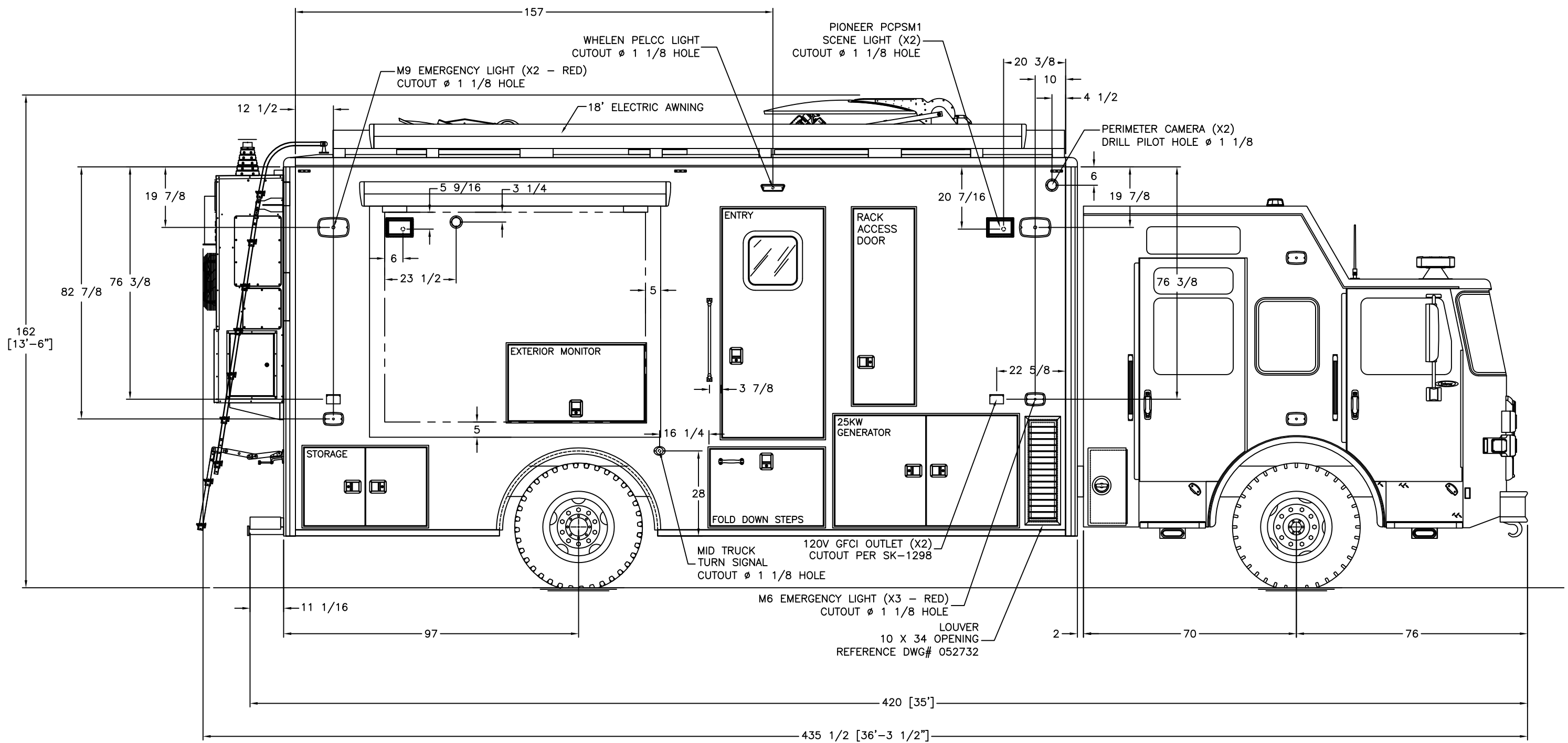



REVISIONS

CHK DATE	CHK BY	DESCRIPTION	DATE	BY	REV
4/3/23	MRS	ENGINEERING RELEASE	3/29/23	CJM	00

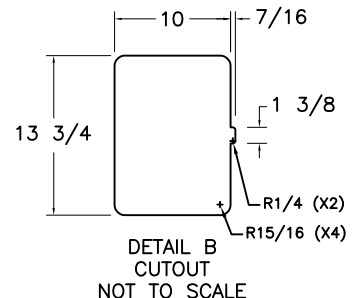
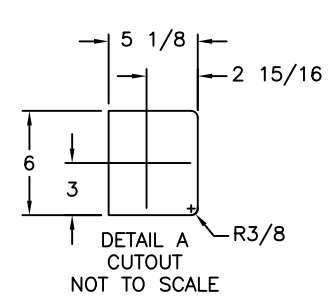
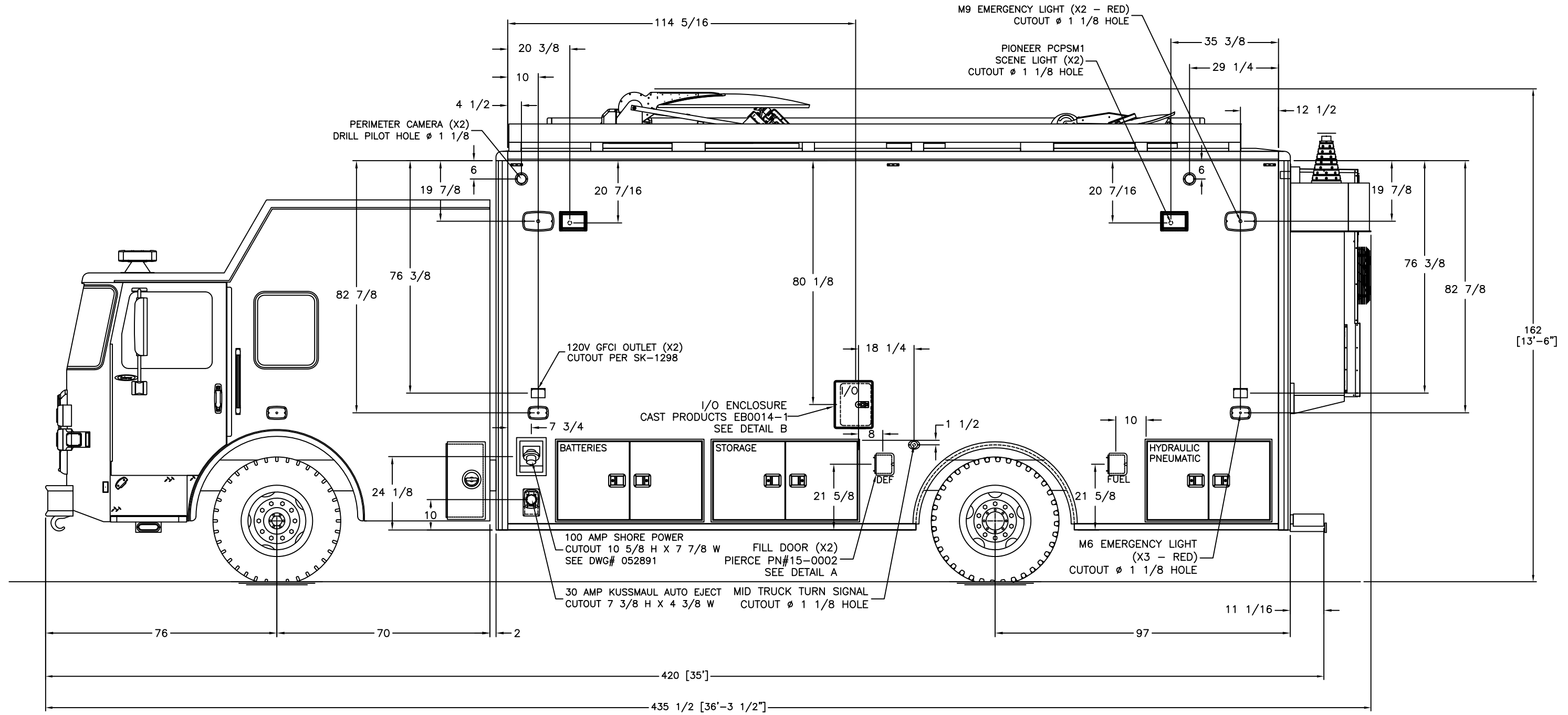


----- INSIDE EDGE OF FRAME TUBE

THIS DRAWING IS THE PROPERTY OF FRONTLINE COMMUNICATIONS CORPORATION. IT IS CONFIDENTIAL AND ALL RIGHTS ARE RESERVED. IT SHALL NOT BE REPRODUCED, COPIED, LENT, NOR USED FOR ANY PURPOSE OTHER THAN THAT FOR WHICH IT IS SPECIFICALLY FURNISHED.

DO NOT SCALE THIS DRAWING DIMENSIONS ARE IN INCHES UNLESS OTHERWISE SPECIFIED		MATERIAL SEE NOTES		 12770 44th Street North Clearwater, FL 33762-4713 (727) 573-0400 FAX (727) 571-3295	
TOLERANCES: ANGULAR: ± 1° BEND: ± 1° 2 PLACE DECIMAL ± .010 3 PLACE DECIMAL ± .005 FRACTIONS ± 1/16		FINISH MILL FINISH		EXTERIOR LAYOUT CURB SIDE	
JOB NUMBER OR PRODUCT LINE 91984		DRAWN BY CJM	DATE 3/29/23	SIZE B	DWG NO. 91984-50200
SHEET 1 OF 1	SCALE 35	CHECKED BY MRS	DATE 4/3/23		

REVISIONS					
CHK DATE	CHK BY	DESCRIPTION	DATE	BY	REV
4/3/23	MRS	ENGINEERING RELEASE	3/29/23	CJM	00



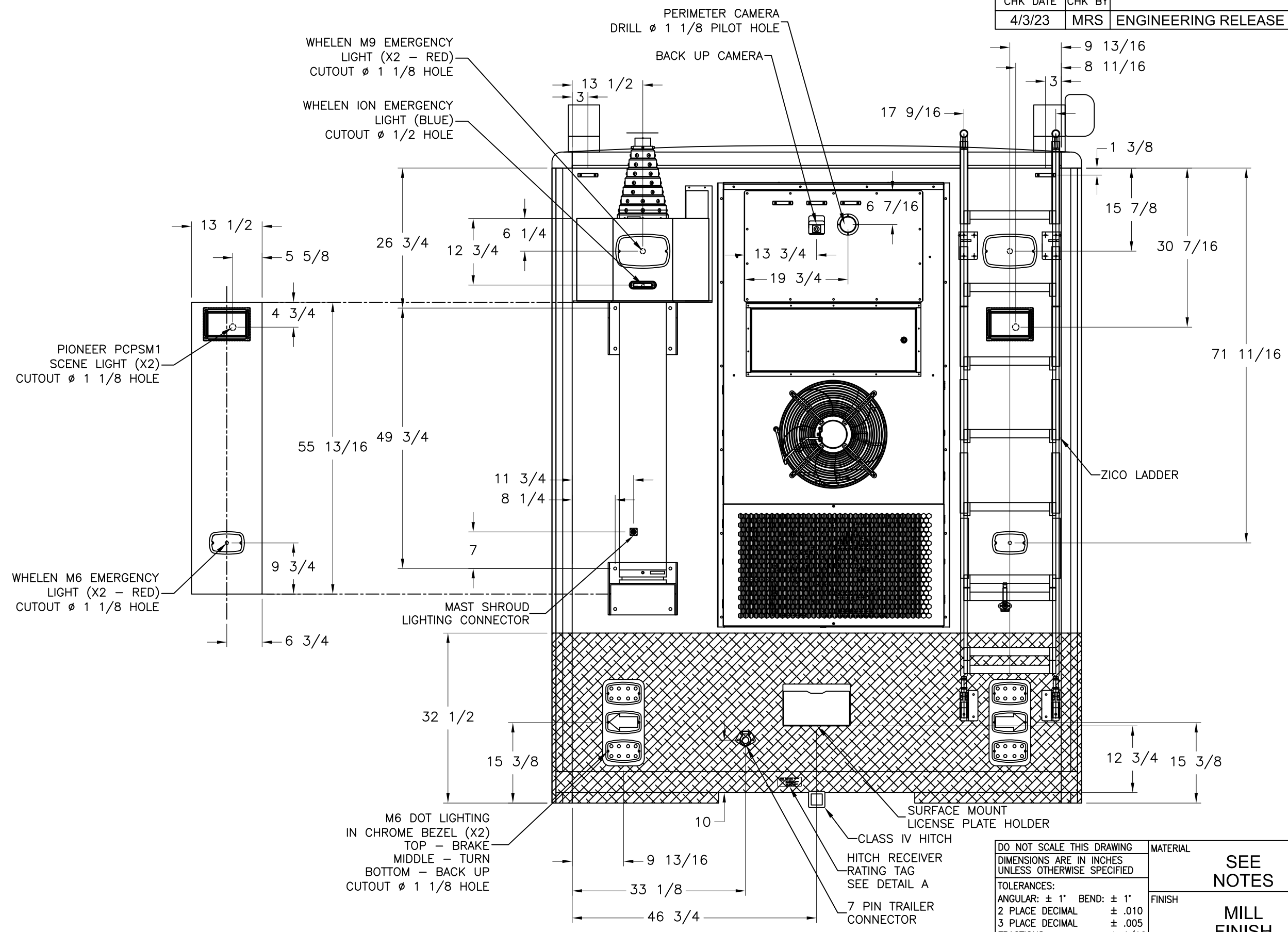
----- INSIDE EDGE OF FRAME TUBE

THIS DRAWING IS THE PROPERTY OF FRONTLINE COMMUNICATIONS CORPORATION. IT IS CONFIDENTIAL AND ALL RIGHTS ARE RESERVED. IT SHALL NOT BE REPRODUCED, COPIED, LENT, NOR USED FOR ANY PURPOSE OTHER THAN THAT FOR WHICH IT IS SPECIFICALLY FURNISHED.

DO NOT SCALE THIS DRAWING DIMENSIONS ARE IN INCHES UNLESS OTHERWISE SPECIFIED		MATERIAL SEE NOTES		 12770 44th Street North Clearwater, FL 33762-4713 (727) 573-0400 FAX (727) 571-3295 A Division of Pierce Manufacturing Inc.	
TOLERANCES: ANGULAR: \pm 1° BEND: \pm 1° 2 PLACE DECIMAL \pm .010 3 PLACE DECIMAL \pm .005 FRACTIONS \pm 1/16		FINISH MILL FINISH		EXTERIOR LAYOUT STREET SIDE	
JOB NUMBER OR PRODUCT LINE 91984		DRAWN BY CJM	DATE 3/29/23	SIZE B	DWG NO. 91984-50300
SHEET 1 OF 1	SCALE 35	CHECKED BY MRS	DATE 4/3/23		

REVISIONS

CHK DATE	CHK BY	DESCRIPTION	DATE	BY	REV
4/3/23	MRS	ENGINEERING RELEASE	3/30/23	CJM	00



4.62
 1.75
 MAXIMUM TRAILER WEIGHT: 8,000 LBS
 MAXIMUM TONGUE WEIGHT:
 800 LBS WITHOUT WEIGHT
 DISTRIBUTING HITCH
 1,000 LBS WITH WEIGHT
 DISTRIBUTING HITCH

DETAIL A
 SCALE 1: 8
 DWG #0053143

REFERENCE PIERCE DWG #1758210
 FOR PLACEMENT INSTRUCTIONS.

INSTALL 1/8" AL BACKER PLATE
 FOR MOUNTING IF NECESSARY.

DO NOT SCALE THIS DRAWING
 DIMENSIONS ARE IN INCHES
 UNLESS OTHERWISE SPECIFIED
 TOLERANCES:
 ANGULAR: ± 1° BEND: ± 1"
 2 PLACE DECIMAL ± .010
 3 PLACE DECIMAL ± .005
 FRACTIONS ± 1/16

MATERIAL
SEE NOTES
 FINISH
MILL FINISH

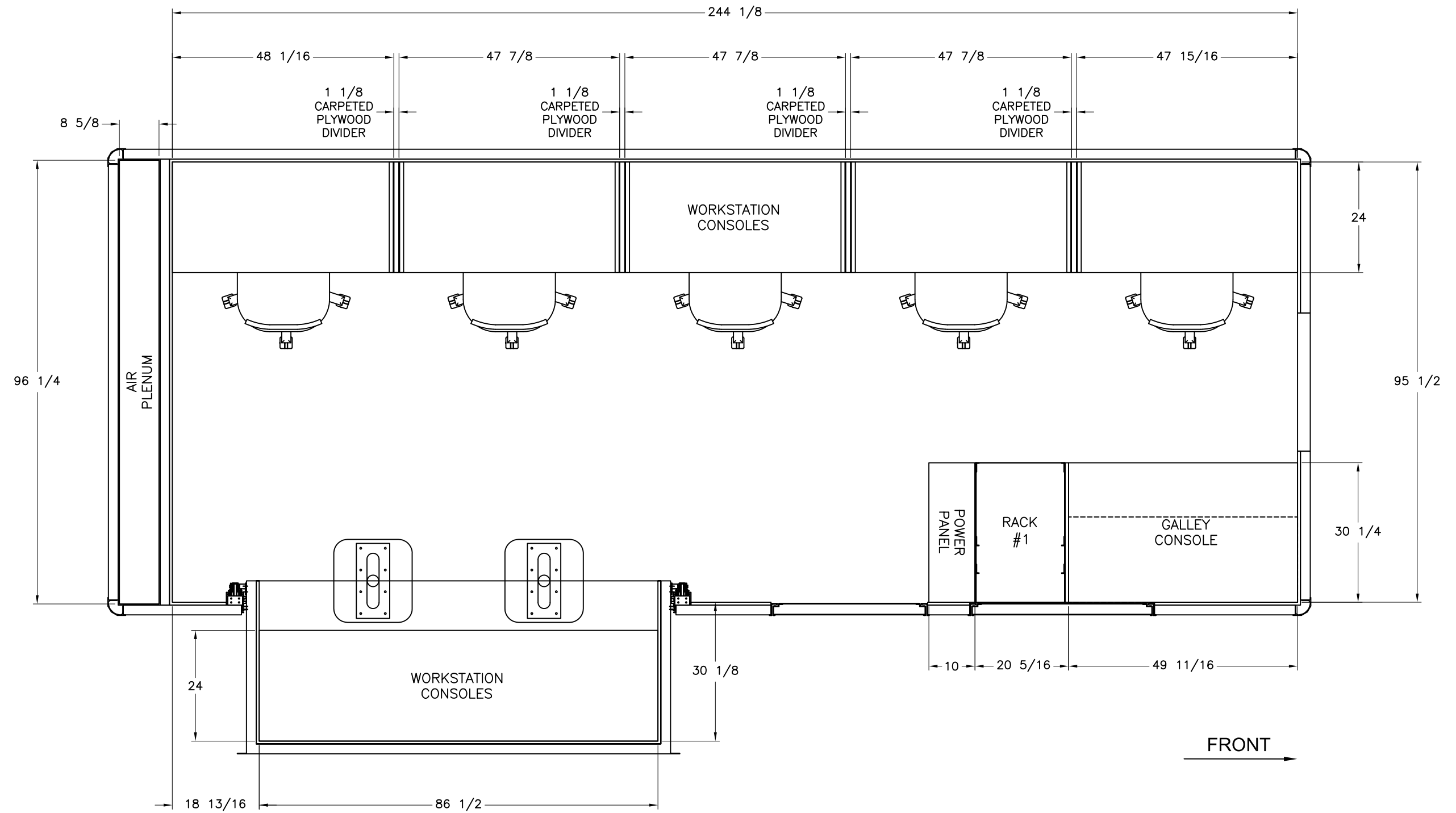
JOB NUMBER OR PRODUCT LINE
91984
 SHEET 1 OF 1 SCALE 20
 DRAWN BY **CJM** DATE **3/30/23**
 CHECKED BY **MRS** DATE **4/3/23**

FRONTLINE COMMUNICATIONS
 An Oshkosh Corporation Company
 12770 44th Street North
 Clearwater, FL 33762-4713
 (727) 573-0400
 FAX (727) 571-3295


EXTERIOR LAYOUT REAR WALL
 SIZE **B** DWG NO. **91984-50500**

THIS DRAWING IS THE PROPERTY OF FRONTLINE COMMUNICATIONS CORPORATION. IT IS CONFIDENTIAL AND ALL RIGHTS ARE RESERVED. IT SHALL NOT BE REPRODUCED, COPIED, LENT, NOR USED FOR ANY PURPOSE OTHER THAN THAT FOR WHICH IT IS SPECIFICALLY FURNISHED.

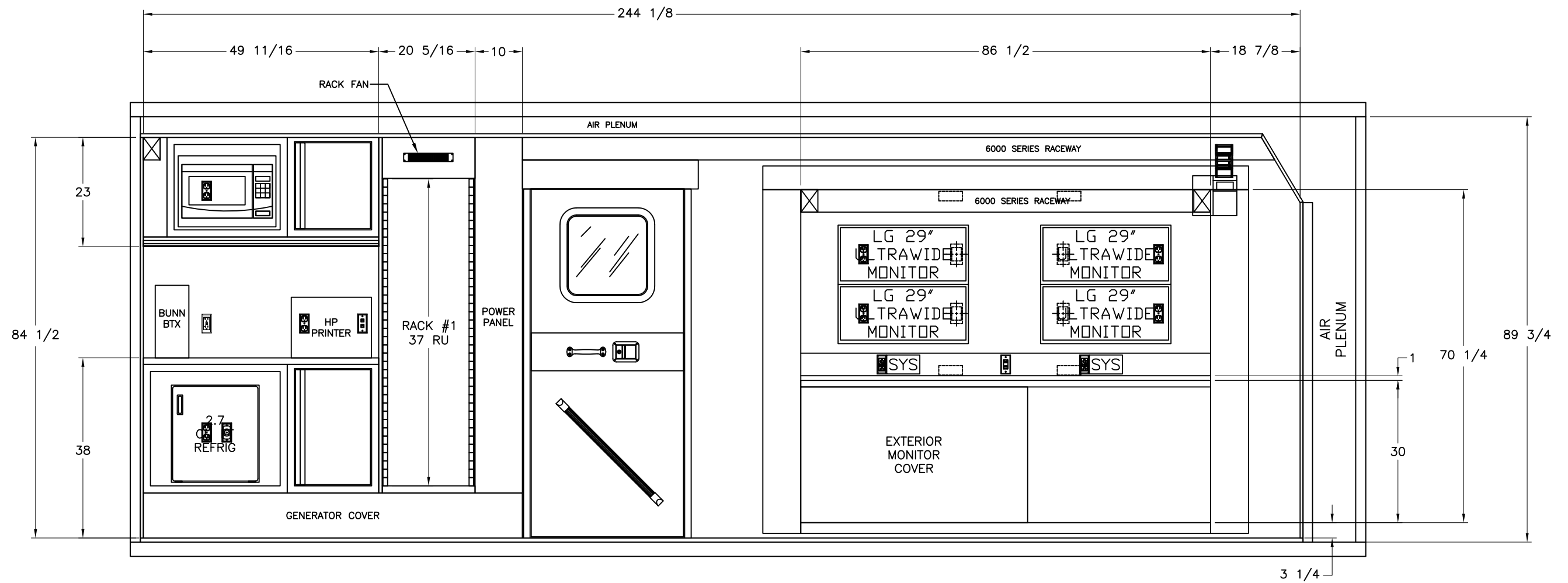
REVISIONS							
CHK DATE	CHK BY	DESCRIPTION			DATE	BY	REV
4/3/23	MRS	ENGINEERING RELEASE			3/24/23	CJM	00



THIS DRAWING IS THE PROPERTY OF FRONTLINE COMMUNICATIONS CORPORATION. IT IS CONFIDENTIAL AND ALL RIGHTS ARE RESERVED. IT SHALL NOT BE REPRODUCED, COPIED, LENT, NOR USED FOR ANY PURPOSE OTHER THAN THAT FOR WHICH IT IS SPECIFICALLY FURNISHED.

DO NOT SCALE THIS DRAWING DIMENSIONS ARE IN INCHES UNLESS OTHERWISE SPECIFIED		MATERIAL SEE NOTES		 12770 44th Street North Clearwater, FL 33762-4713 (727) 573-0400 FAX (727) 571-3295	
TOLERANCES: ANGULAR: ± 1° BEND: ± 1° 2 PLACE DECIMAL ± .010 3 PLACE DECIMAL ± .005 FRACTIONS ± 1/16		FINISH MILL FINISH			
JOB NUMBER OR PRODUCT LINE 91984		DRAWN BY CJM	DATE 3/24/23	INTERIOR LAYOUT FLOOR	
SHEET 1 OF 1	SCALE 25	CHECKED BY MRS	DATE 4/3/23		

REVISIONS						
CHK DATE	CHK BY	DESCRIPTION		DATE	BY	REV
4/3/23	MRS	ENGINEERING RELEASE		3/27/23	CJM	00



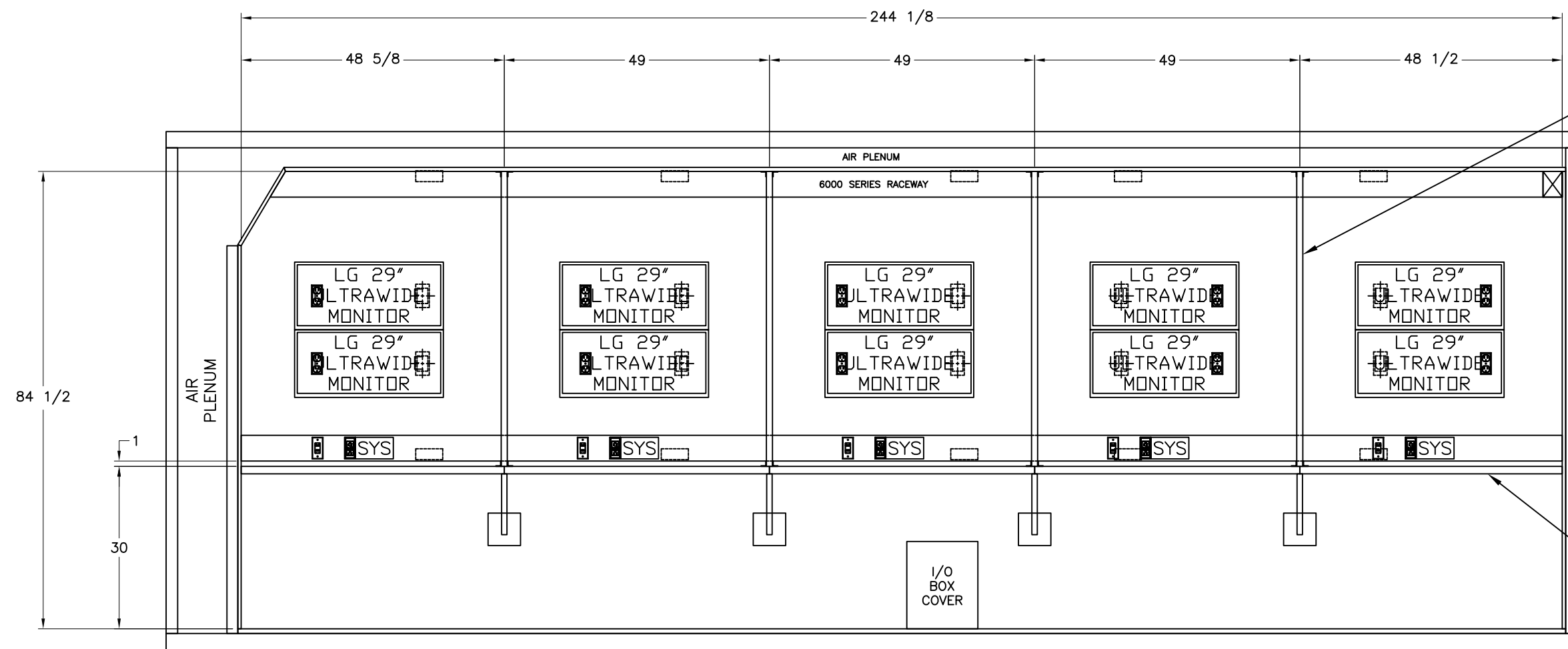
← FRONT

- NETWORK / PHONE
- DIMMER SWITCH (LED LIGHTS)
- 120V AC POWER (DUPLEX W/USB A & C)
- 120V AC POWER GFCI
- 120V AC POWER (DUPLEX)
- 12V DC POWER
- LOW VOLTAGE DEVICE RING (SYSTEM)

THIS DRAWING IS THE PROPERTY OF FRONTLINE COMMUNICATIONS CORPORATION. IT IS CONFIDENTIAL AND ALL RIGHTS ARE RESERVED. IT SHALL NOT BE REPRODUCED, COPIED, LENT, NOR USED FOR ANY PURPOSE OTHER THAN THAT FOR WHICH IT IS SPECIFICALLY FURNISHED.

DO NOT SCALE THIS DRAWING DIMENSIONS ARE IN INCHES UNLESS OTHERWISE SPECIFIED		MATERIAL SEE NOTES		<p>12770 44th Street North Clearwater, FL 33762-4713 (727) 573-0400 FAX (727) 571-3295</p>	
TOLERANCES: ANGULAR: ± 1° BEND: ± 1" 2 PLACE DECIMAL ± .010 3 PLACE DECIMAL ± .005 FRACTIONS ± 1/16		FINISH MILL FINISH			
JOB NUMBER OR PRODUCT LINE 91984		DRAWN BY CJM	DATE 3/27/23	INTERIOR LAYOUT CURB SIDE	
SHEET 1 OF 1	SCALE 25	CHECKED BY MRS	DATE 4/3/23		

REVISIONS						
CHK DATE	CHK BY	DESCRIPTION		DATE	BY	REV
4/3/23	MRS	ENGINEERING RELEASE		3/27/23	CJM	00



WORKSTATION DIVIDERS (4 PLCS)
 CONSOLE TO CEILING
 USE 5/8" PLYWOOD COVERED
 W/CARPETING TO MATCH WALLS

CUT OUT FOR RACEWAY AT CEILING
 AND CONSOLE TOP

ATTACH USING 1" X 1" X 1/8" AL
 ANGLE ON BOTH SIDES AT CEILING
 AND CONSOLE TOP

WORKSTATION CONSOLE TOPS
 REFERENCE DWG# 91984-70420
 5 PIECES W/SEAM CENTERED AT DIVIDER

- DIMMER SWITCH (LED LIGHTS)
- 120V AC POWER (DUPLEX W/USB A & C)
- 120V AC POWER (DUPLEX)
- LOW VOLTAGE DEVICE RING (SYSTEM)

FRONT
 →

THIS DRAWING IS THE PROPERTY OF FRONTLINE COMMUNICATIONS CORPORATION. IT IS CONFIDENTIAL AND ALL RIGHTS ARE RESERVED. IT SHALL NOT BE REPRODUCED, COPIED, LENT, NOR USED FOR ANY PURPOSE OTHER THAN THAT FOR WHICH IT IS SPECIFICALLY FURNISHED.

DO NOT SCALE THIS DRAWING DIMENSIONS ARE IN INCHES UNLESS OTHERWISE SPECIFIED		MATERIAL SEE NOTES		 12770 44th Street North Clearwater, FL 33762-4713 (727) 573-0400 FAX (727) 571-3295	
TOLERANCES: ANGULAR: ± 1° BEND: ± 1" 2 PLACE DECIMAL ± .010 3 PLACE DECIMAL ± .005 FRACTIONS ± 1/16		FINISH MILL FINISH			
JOB NUMBER OR PRODUCT LINE 91984		DRAWN BY CJM	DATE 3/27/23	INTERIOR LAYOUT STREET SIDE	
SHEET 1 OF 1	SCALE 25	CHECKED BY MRS	DATE 4/3/23		