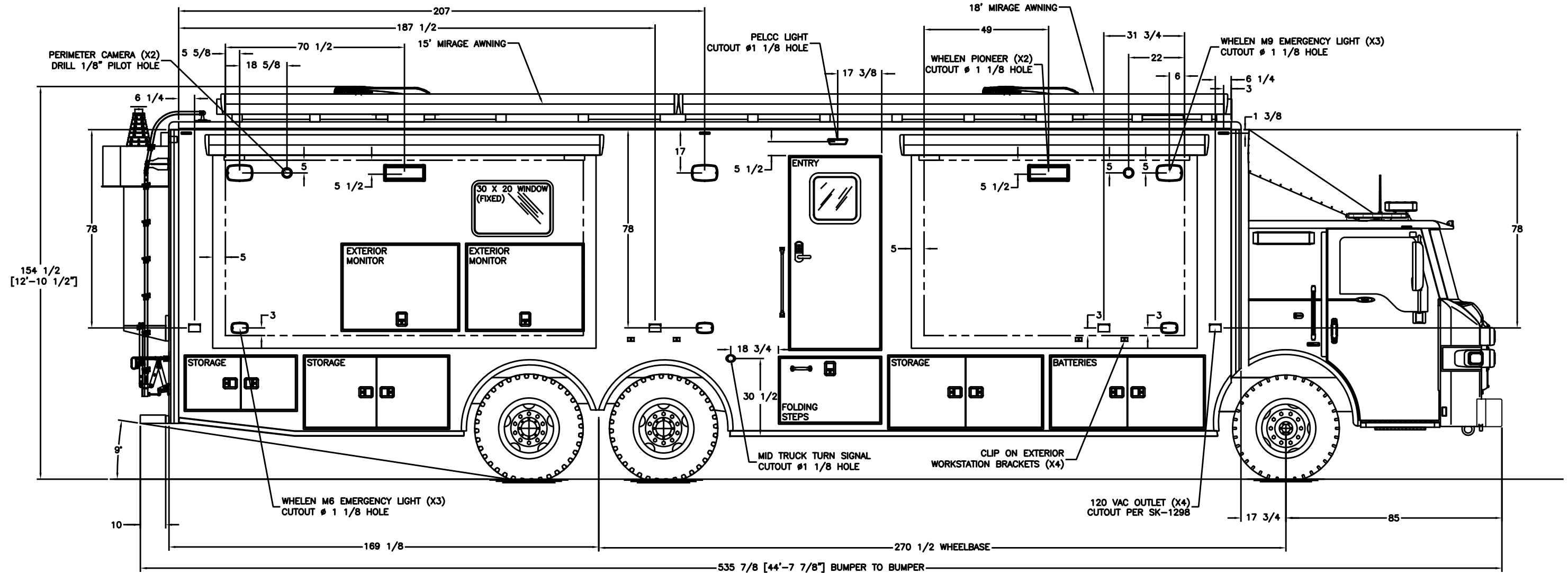


REVISIONS					
CHK DATE	CHK BY	DESCRIPTION	DATE	BY	REV
11/30/22	JRP	MOVED OUTLETS AND LIGHTS TO CLEAR TUBES	11/30/22	JAA	01

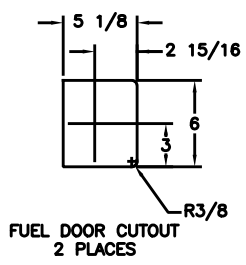
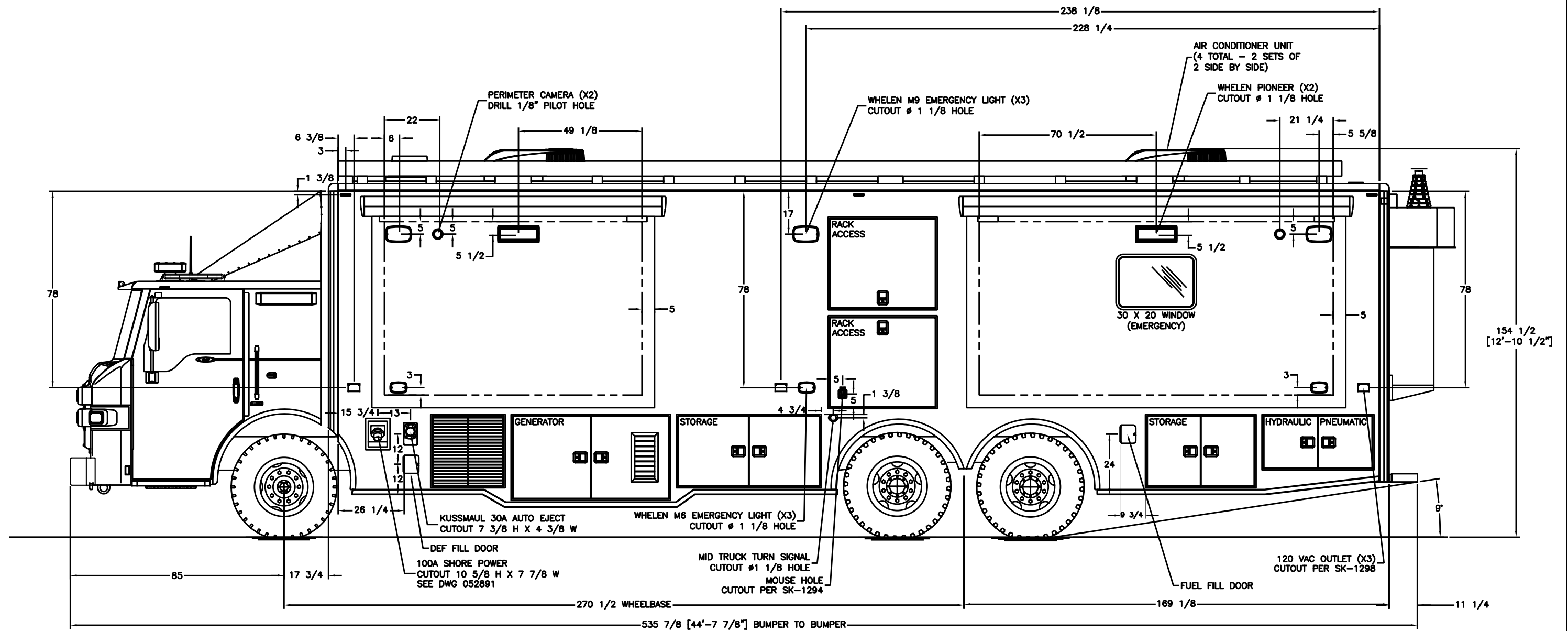


----- INSIDE EDGE OF FRAME TUBE

THIS DRAWING IS THE PROPERTY OF FRONTLINE COMMUNICATIONS CORPORATION. IT IS CONFIDENTIAL AND ALL RIGHTS ARE RESERVED. IT SHALL NOT BE REPRODUCED, COPIED, LENT, NOR USED FOR ANY PURPOSE OTHER THAN THAT FOR WHICH IT IS SPECIFICALLY FURNISHED.

DO NOT SCALE THIS DRAWING DIMENSIONS ARE IN INCHES UNLESS OTHERWISE SPECIFIED	MATERIAL		N/A		FRONTLINE COMMUNICATIONS <small>A Division of Pierce Manufacturing Inc.</small>	12770 44th Street North Clearwater, FL 33762-4713 (727) 573-0400 FAX (727) 571-3295	
	FINISH		N/A			EXTERIOR LAYOUT CURB SIDE	
TOLERANCES: ANGULAR: ± 1° BEND: ± 1° 2 PLACE DECIMAL ± .010 3 PLACE DECIMAL ± .005 FRACTIONS ± 1/16	JOB NUMBER OR PRODUCT LINE	DRAWN BY	DATE				
	91974	JAA	10/13/22				
SHEET	SCALE	CHECKED BY	DATE	SIZE	DWG NO.		
1 OF 1	40	JRP	10/13/22	B	91974-50200		

REVISIONS					
CHK DATE	CHK BY	DESCRIPTION	DATE	BY	REV
11/8/22	JRP	ADDED DIMENSIONS	11/8/22	JAA	01

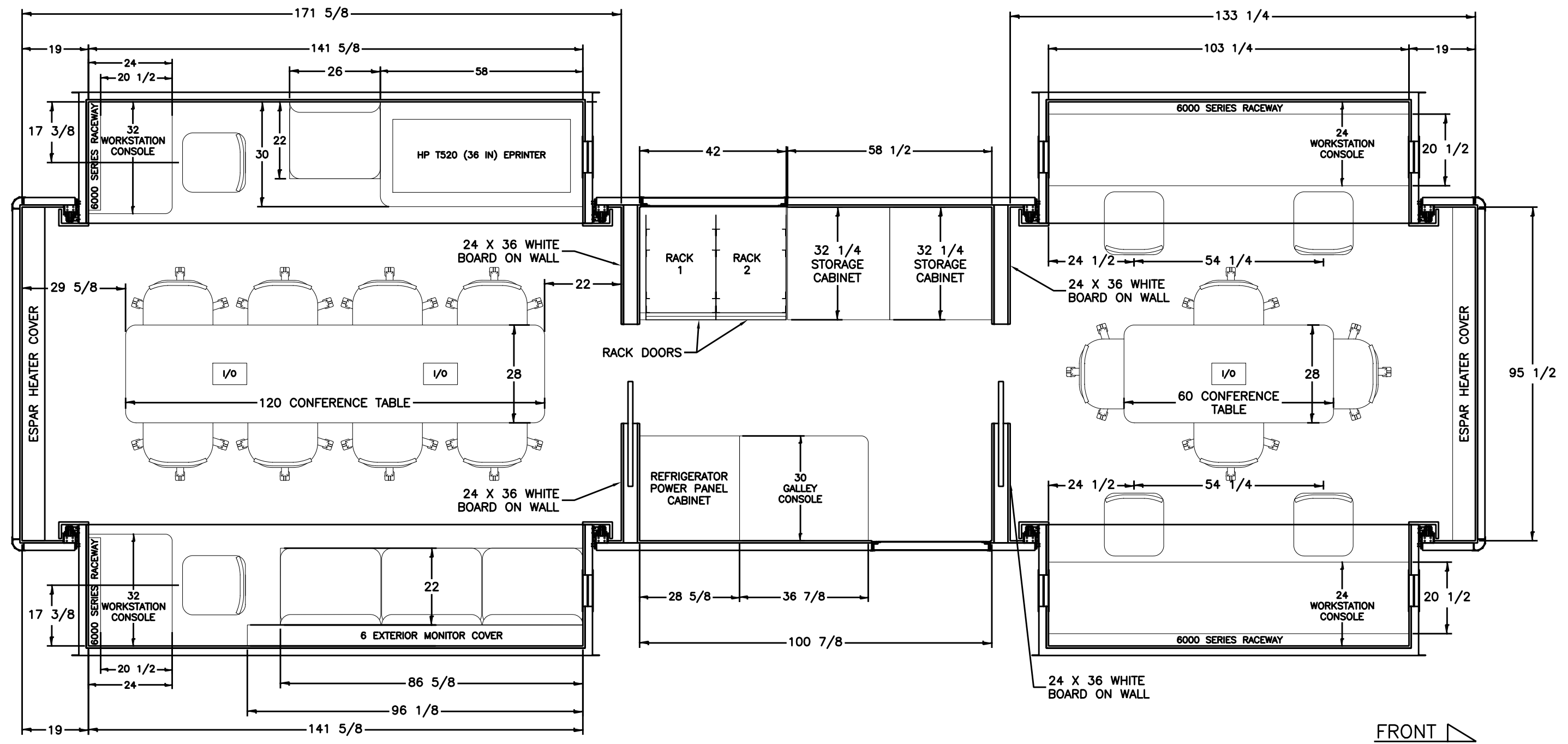


--- INSIDE EDGE OF FRAME TUBE

THIS DRAWING IS THE PROPERTY OF FRONTLINE COMMUNICATIONS CORPORATION. IT IS CONFIDENTIAL AND ALL RIGHTS ARE RESERVED. IT SHALL NOT BE REPRODUCED, COPIED, LENT, NOR USED FOR ANY PURPOSE OTHER THAN THAT FOR WHICH IT IS SPECIFICALLY FURNISHED.

DO NOT SCALE THIS DRAWING DIMENSIONS ARE IN INCHES UNLESS OTHERWISE SPECIFIED		MATERIAL N/A		FRONTLINE COMMUNICATIONS <small>A Division of Pierce Manufacturing Inc.</small>		12770 44th Street North Clearwater, FL 33762-4713 (727) 573-0400 FAX (727) 571-3295	
TOLERANCES: ANGULAR: ± 1° BEND: ± 1° 2 PLACE DECIMAL ± .010 3 PLACE DECIMAL ± .005 FRACTIONS ± 1/16		FINISH N/A		EXTERIOR LAYOUT STREET SIDE		SIZE B	
JOB NUMBER OR PRODUCT LINE 91974		DRAWN BY JAA				DATE 10/13/22	
SHEET 1 OF 1		SCALE 40		CHECKED BY JRP		DATE 10/13/22	

REVISIONS					
CHK DATE	CHK BY	DESCRIPTION	DATE	BY	REV
10/24/22	JRP	INITIAL RELEASE	10/24/22	JAA	00



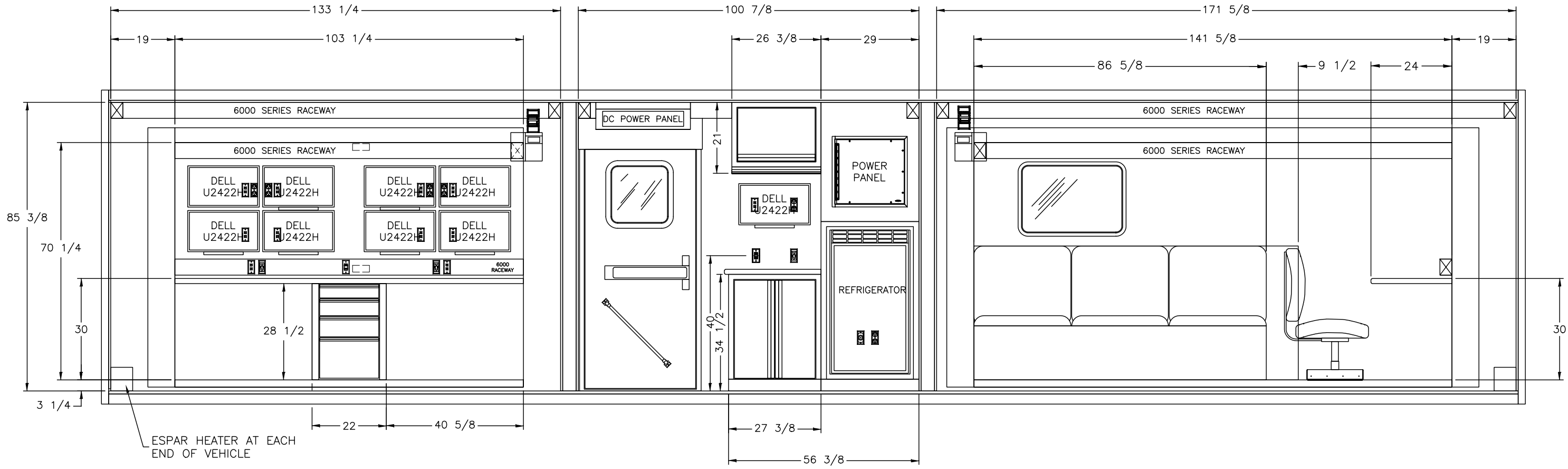
FRONT ↘

NOTES:
1) CONSOLES SOLID SURFACE ANTHRACITE







THIS DRAWING IS THE PROPERTY OF FRONTLINE COMMUNICATIONS CORPORATION. IT IS CONFIDENTIAL AND ALL RIGHTS ARE RESERVED. IT SHALL NOT BE REPRODUCED, COPIED, LENT, NOR USED FOR ANY PURPOSE OTHER THAN THAT FOR WHICH IT IS SPECIFICALLY FURNISHED.

DO NOT SCALE THIS DRAWING DIMENSIONS ARE IN INCHES UNLESS OTHERWISE SPECIFIED		MATERIAL N/A		FRONTLINE COMMUNICATIONS <small>A Division of Pierce Manufacturing Inc.</small> 12770 44th Street North Clearwater, FL 33762-4713 (727) 573-0400 FAX (727) 571-3295	
TOLERANCES: ANGULAR: ± 1° BEND: ± 1° 2 PLACE DECIMAL ± .010 3 PLACE DECIMAL ± .005 FRACTIONS ± 1/16		FINISH N/A			
JOB NUMBER OR PRODUCT LINE 91974		DRAWN BY JAA	DATE 10/24/22	INTERIOR LAYOUT FLOOR SIZE B DWG NO. 91974-40100	
SHEET 1 OF 1	SCALE 1:30	CHECKED BY JRP	DATE 10/24/22		

REVISIONS					
CHK DATE	CHK BY	DESCRIPTION	DATE	BY	REV
11/7/22	JRP	ADDED POWER/TUNNEL FOR ADD'L MONITOR	11/7/22	JAA	01



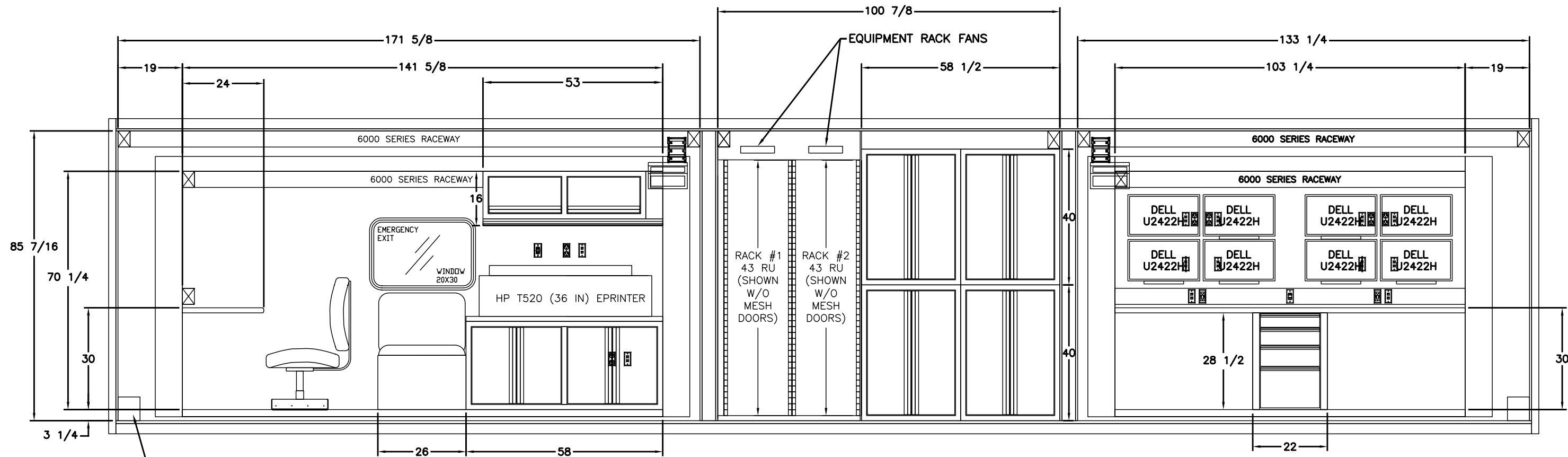
FRONT

-  LIGHT SWITCH
-  120V AC POWER POINT (DUPLEX w/ DUAL USB)
-  120 VAC POWER POINT
-  12VDC POWER POINT
-  LIGHTING CONTROL
-  LOW VOLTAGE DEVICE RING (SYSTEMS WIRING)

THIS DRAWING IS THE PROPERTY OF FRONTLINE COMMUNICATIONS CORPORATION. IT IS CONFIDENTIAL AND ALL RIGHTS ARE RESERVED. IT SHALL NOT BE REPRODUCED, COPIED, LENT, NOR USED FOR ANY PURPOSE OTHER THAN THAT FOR WHICH IT IS SPECIFICALLY FURNISHED.

DO NOT SCALE THIS DRAWING DIMENSIONS ARE IN INCHES UNLESS OTHERWISE SPECIFIED		MATERIAL SEE CALLOUTS		FRONTLINE COMMUNICATIONS <small>A Division of Pierce Manufacturing Inc.</small> 12770 44th Street North Clearwater, FL. 33762-4713 (727) 573-0400 FAX (727) 571-3295	
TOLERANCES: ANGULAR: ± 1° BEND: ± 1° 2 PLACE DECIMAL ± .010 3 PLACE DECIMAL ± .005 FRACTIONS ± 1/16		FINISH SEE W/O		INTERIOR LAYOUT CURB SIDE	
JOB NUMBER OR PRODUCT LINE 91974		DRAWN BY JAA	DATE 10/25/22		
SHEET 1 OF 1	SCALE 1:30	CHECKED BY JRP	DATE 10/25/22	SIZE B	DWG NO. 91974-40200

REVISIONS					
CHK DATE	CHK BY	DESCRIPTION	DATE	BY	REV
10/26/22	JRP	INITIAL RELEASE	10/26/22	JAA	00



DRIVERS SIDE INTERIOR LAYOUT

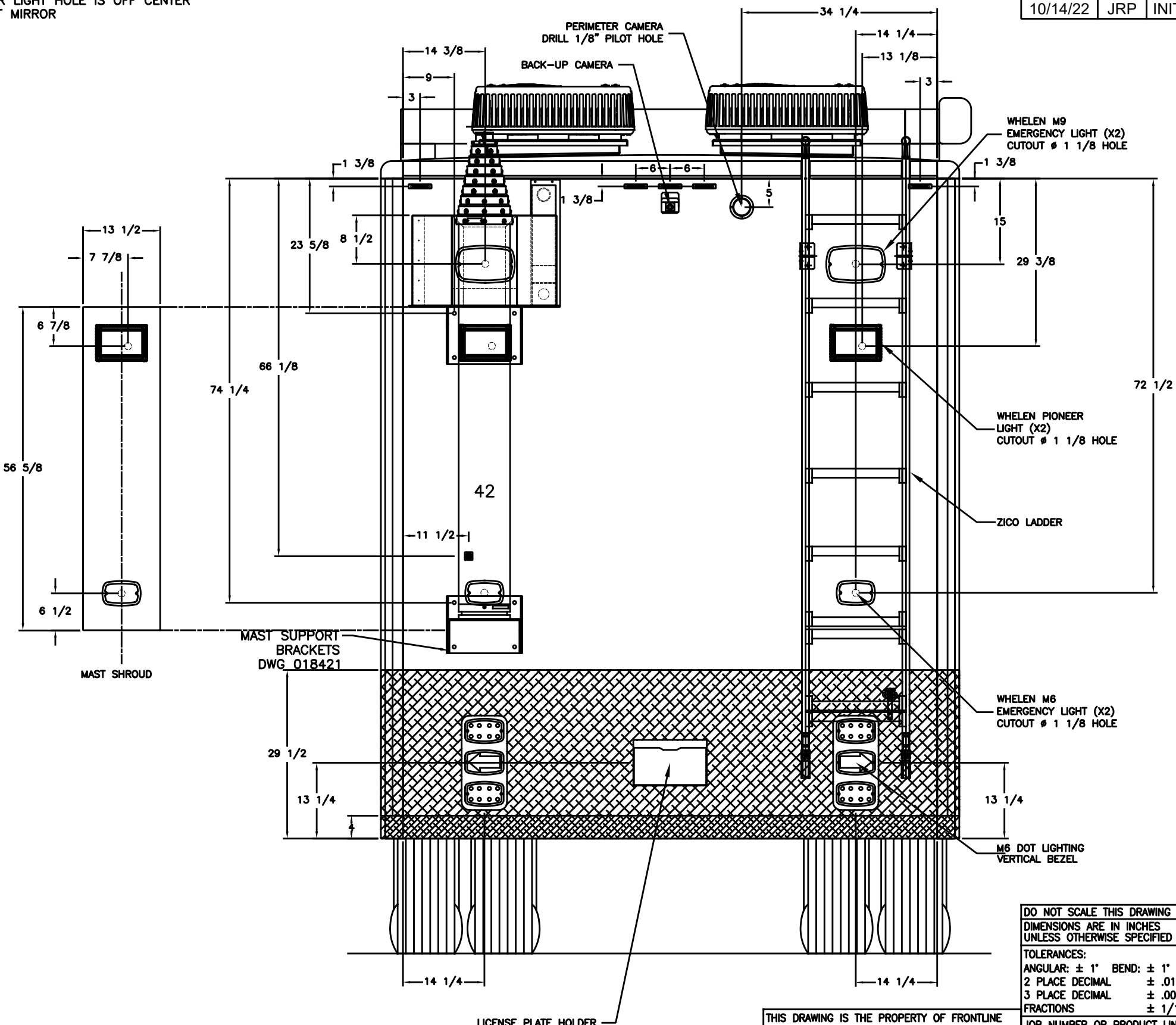
- 120V AC POWER POINT (DUPLEX w/ DUAL USB)
- 120 VAC POWER POINT
- LIGHTING CONTROL
- LOW VOLTAGE DEVICE RING (SYSTEMS WIRING)

FRONT

THIS DRAWING IS THE PROPERTY OF FRONTLINE COMMUNICATIONS CORPORATION. IT IS CONFIDENTIAL AND ALL RIGHTS ARE RESERVED. IT SHALL NOT BE REPRODUCED, COPIED, LENT, NOR USED FOR ANY PURPOSE OTHER THAN THAT FOR WHICH IT IS SPECIFICALLY FURNISHED.

DO NOT SCALE THIS DRAWING DIMENSIONS ARE IN INCHES UNLESS OTHERWISE SPECIFIED		MATERIAL SEE CALLOUTS		 12770 44th Street North Clearwater, FL. 33762-4713 (727) 573-0400 FAX (727) 571-3295 A Division of Pierce Manufacturing Inc.	
TOLERANCES: ANGULAR: ± 1° BEND: ± 1° 2 PLACE DECIMAL ± .010 3 PLACE DECIMAL ± .005 FRACTIONS ± 1/16		FINISH SEE W/O			
JOB NUMBER OR PRODUCT LINE 91974		DRAWN BY JAA	DATE 10/26/22	INTERIOR LAYOUT STREET SIDE	
SHEET 1 OF 1	SCALE 1:30	CHECKED BY JRP	DATE 10/26/22		

NOTE:
PIONEER LIGHT HOLE IS OFF CENTER
DO NOT MIRROR



REVISIONS					
CHK DATE	CHK BY	DESCRIPTION	DATE	BY	REV
10/14/22	JRP	INITIAL RELEASE	10/14/22	JAA	00

DO NOT SCALE THIS DRAWING
DIMENSIONS ARE IN INCHES
UNLESS OTHERWISE SPECIFIED

TOLERANCES:
ANGULAR: ± 1° BEND: ± 1"
2 PLACE DECIMAL ± .010
3 PLACE DECIMAL ± .005
FRACTIONS ± 1/16

JOB NUMBER OR PRODUCT LINE
91974

SHEET 1 OF 1 SCALE 20

MATERIAL	N/A
FINISH	N/A
DRAWN BY	JAA
DATE	10/14/22
CHECKED BY	JRP
DATE	10/14/22

FRONTLINE COMMUNICATIONS
A Division of Pierce Manufacturing Inc.

12770 44th Street North
Clearwater, FL 33762-4713
(727) 573-0400
FAX (727) 571-3295

EXTERIOR LAYOUT REAR WALL

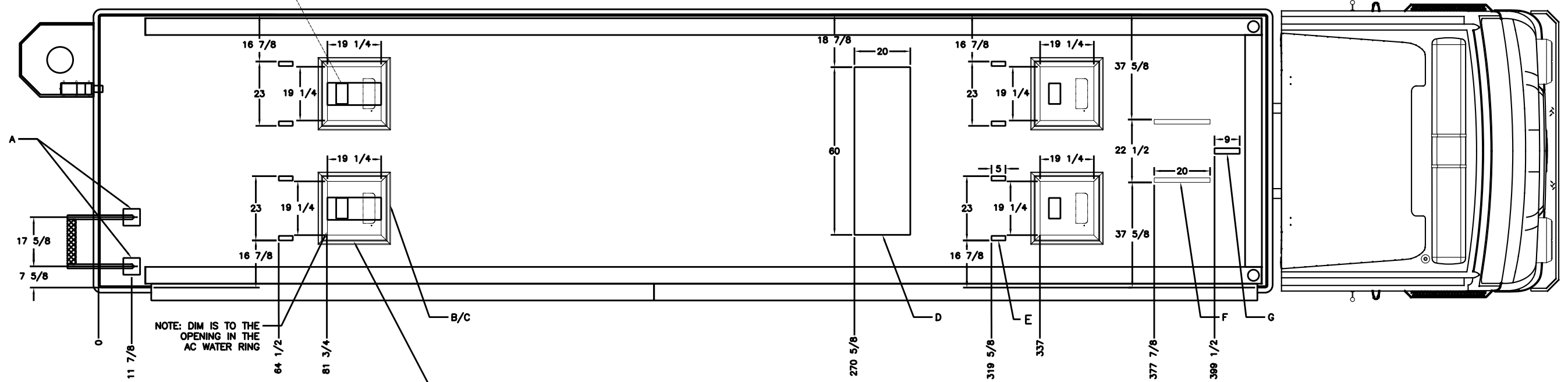
SIZE **B** DWG NO. **91974-50500**

THIS DRAWING IS THE PROPERTY OF FRONTLINE COMMUNICATIONS CORPORATION. IT IS CONFIDENTIAL AND ALL RIGHTS ARE RESERVED. IT SHALL NOT BE REPRODUCED, COPIED, LENT, NOR USED FOR ANY PURPOSE OTHER THAN THAT FOR WHICH IT IS SPECIFICALLY FURNISHED.

REVISIONS						
CHK	DATE	CHK BY	DESCRIPTION	DATE	BY	REV
11/8/22		JRP	ADDED DIMENSIONS	11/8/22	JAA	01

NOTE A/C ADAPTER PLATE ORIENTATION

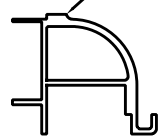
(4X) CUTOUT 4.25 X 7.50
MARK A/C DUCT USING
DWG NO 053250
AS A TEMPLATE



NOTE: DIM IS TO THE
OPENING IN THE
AC WATER RING

19.25 x 19.25 CUTOUT
THRU DIAMOND PLATE ONLY
MATCH AC WATER RING

0 DIM REPRESENTS
THIS LOCATION



ITEM	QTY	DESCRIPTION	REMARK
G	1	CABLE COVER	2 X 1 X 1/8 X 9 AL TUBE
F	2	ALUMINUM UNISTRUT	1 5/8 X 1 5/8 X 20
E	12	ALUMINUM UNISTRUT	1 5/8 X 1 5/8 X 5
D	1	GRAPHICS PLATE	20 X 60 X 3/32 ALUMINUM PLATE
C	6	A/C ADAPTER PLATE	SEE DRAWING 053250 FOR DETAILS
B	6	A/C MOUNT BASE	SEE DRAWING 052889 FOR DETAILS
A	2	LADDER MOUNTING PLATE	6 X 6 X 1/2 ALUMINUM PLATE

THIS DRAWING IS THE PROPERTY OF FRONTLINE COMMUNICATIONS CORPORATION. IT IS CONFIDENTIAL AND ALL RIGHTS ARE RESERVED. IT SHALL NOT BE REPRODUCED, COPIED, LENT, NOR USED FOR ANY PURPOSE OTHER THAN THAT FOR WHICH IT IS SPECIFICALLY FURNISHED.

DO NOT SCALE THIS DRAWING
DIMENSIONS ARE IN INCHES
UNLESS OTHERWISE SPECIFIED

TOLERANCES:
ANGULAR: ± 1° BEND: ± 1°
2 PLACE DECIMAL ± .010
3 PLACE DECIMAL ± .005
FRACTIONS ± 1/16

JOB NUMBER OR PRODUCT LINE
91974

SHEET 2 OF 2 SCALE 40

MATERIAL
SEE NOTES

FINISH
MILL FINISH

DRAWN BY
JAA DATE
10/13/22

CHECKED BY
JRP DATE
10/13/22

FRONTLINE
COMMUNICATIONS
A Division of Pierce Manufacturing Inc.
12770 44th Street North
Clearwater, FL 33762-4713
(727) 573-0400
FAX (727) 571-3295

**EXTERIOR
LAYOUT
ROOF**

SIZE DWG NO.
B 91974-50600